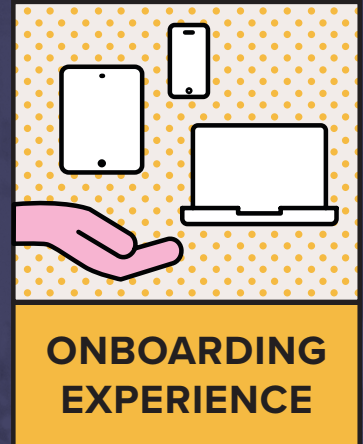


Address employee needs on day one.

And never hear their two weeks.

Why digital transformation in
the workplace works.



Harness the boom of digital technology.

Digital transformation is all around. Business processes, employee experiences and company culture are all being shaped by the digital technologies we use. But, simply leveraging any technology does not automatically provide benefits — in fact, the wrong technology can often have unintended consequences.

Challenges arise when:



Employees and IT are not at the same location



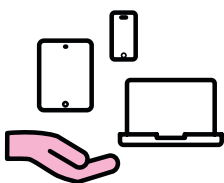
Employees have a variety of needs and digital experience



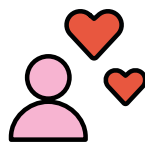
Employees are leveraging different hardware and software

All of these challenges are common. Remote workers are the norm, there are five generations currently in the workplace and the days of all employees using the same devices and applications are over.

However, a successful digital transformation plan can overcome these obstacles and be achieved when the right tools are in place. Apple's ease of use and growing demand from employees — paired with Jamf, the standard for Apple in the enterprise — has a proven history of:



Empowering employees to be productive on day one



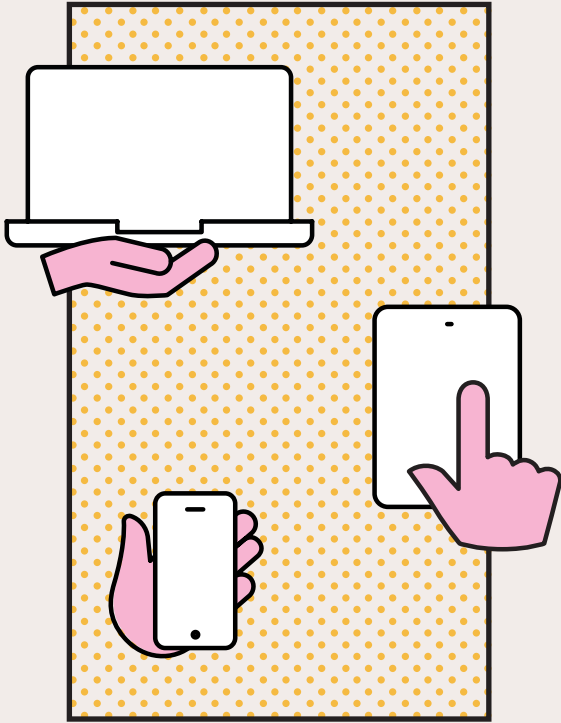
Keeping employees happy throughout their employment



Cultivating a cohesive culture for all employees

If your organization is looking to hire and retain top talent, and do so in the most cost-effective way possible, it's time to take your technologies seriously and transform responsibly.

Onboarding Experience



First impressions matter.

With **66%** of organizations allowing remote workers and **16%** of employees working remote full time¹,

it is more difficult to ensure employees get up and running with their technology and become productive on day one of employment.

This is not the case when you leverage Apple and Jamf.



Leveraging Apple's enrollment services and Jamf's zero-touch device deployment model, organizations can ship shrink-wrapped Apple hardware to users on-site or remote, and the employee simply unboxes, powers on and gets started. Starting employees off right is essential to keeping them and maximizing their time.

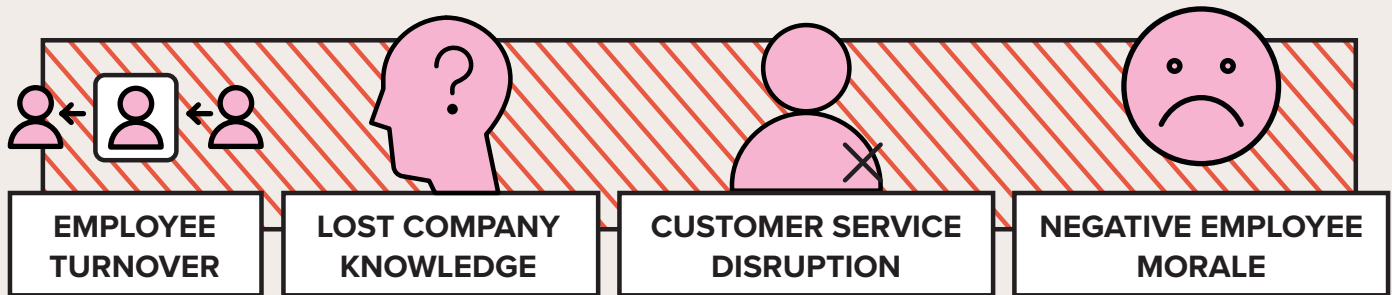
Delivering a strong onboarding experience can improve new hire retention rates by **82% and productivity by over **70%**².**

Employee Experience

Better results from start to finish.

Employee experience is the third-highest key initiative for HR with **66% saying it is critical to achieving business goals³.**

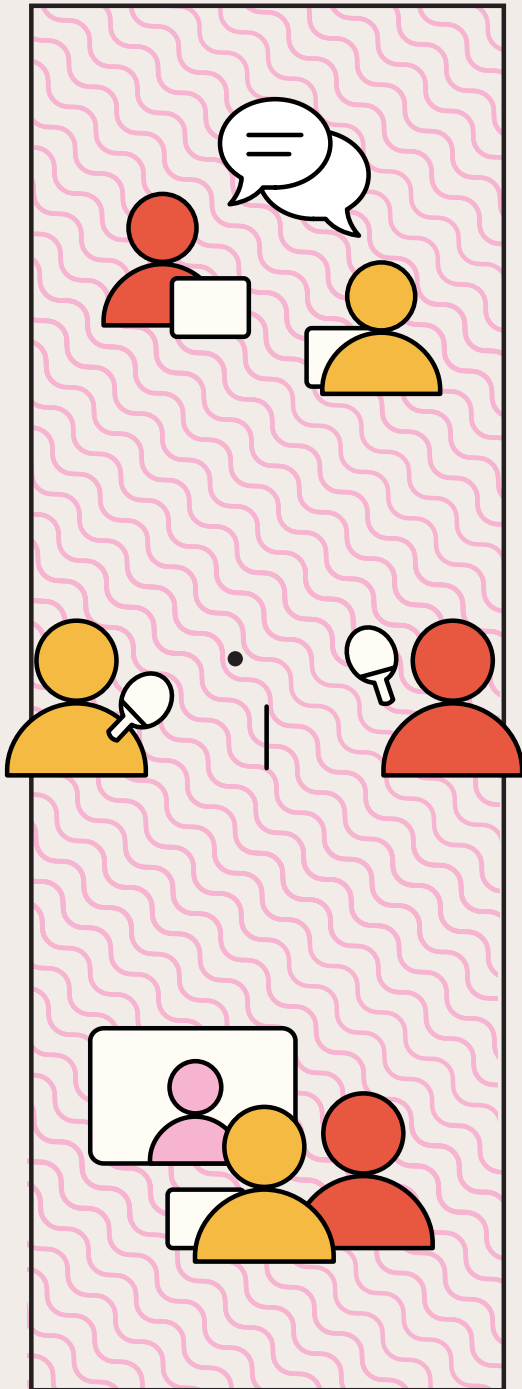
With talent shortages and high demand to quickly fill roles, organizations must ensure they retain the talent they have. When they don't, they incur the cost of:



In fact, the average cost of turnover is **25%** of an employee's salary⁴. To keep employees employed, it's important to offer them the technology they feel most productive on.

This is often called an employee-choice program, and **94%** of employees will choose to work or stay at a company that gives them device choice⁵. And when given the choice between Mac and PC, **72%** will choose Mac⁶.

Cultural Experience



Happy and engaged employees stay.

Delivering great onboarding and employee experiences manifests into providing a culture that employees are proud to be a part of.

Feeling supported by the organization through access to tools that make them most productive, creative and collaborative is a monumental step towards a lasting relationship.

Each employee is unique, but the common ground is they want to be empowered to do their best work. When you address their needs, they'll never have a reason to leave. Offer the tools to help them succeed — and reap the rewards with them.

To start your digital transformation today:



Contact Us

Request Trial

Or contact your preferred authorized reseller of
Apple devices to take Jamf for a test drive.

¹<https://www.talentlms.com/blog/remote-work-statistics-survey/>

²<https://b2b-assets.glassdoor.com/the-true-cost-of-a-bad-hire.pdf>

³<https://www.cio.com/article/3428680/what-is-employee-experience-your-key-to-talent-retention-and-recruitment.html>

⁴<https://www.nobscot.com/library/retention.cfm>

⁵<https://www.jamf.com/resources/e-books/global-survey-mac-in-the-enterprise/>

⁶<https://www.jamf.com/resources/e-books/survey-the-impact-of-device-choice-on-the-employee-experience/>