



Jamf Pro Premium Onboarding – iOS

Jamf understands that organizations have different needs and experiences. Therefore, we offer a variety of onboarding services with multiple delivery methods and levels of training. Jamf will work with you to determine which option is the most efficient and effective for you and your organization.

During the personalized Jamf Premium Onboarding sessions, a Jamf expert works with you to configure Jamf Pro further and integrate it more seamlessly into your existing environment. Through a hands-on approach, we familiarize you with Jamf Pro features and configurations, provide workflow recommendations, review support resources available and introduce you to additional training and certification options.

This service offering is designed to be delivered over a single session. We have discovered that those who participate in the session within the first month are the most successful at truly profiting from all of the features that Jamf Pro has to offer. Engineers are available in many time zones, with sessions available to schedule in blocks of four hours.

The goal of this engagement is to build a working framework to support the enrollment and management of iOS devices. This engagement does not include enrollment of every device in a customer's environment but instead focuses on long-term workflows for success — teaching the basics behind the process.

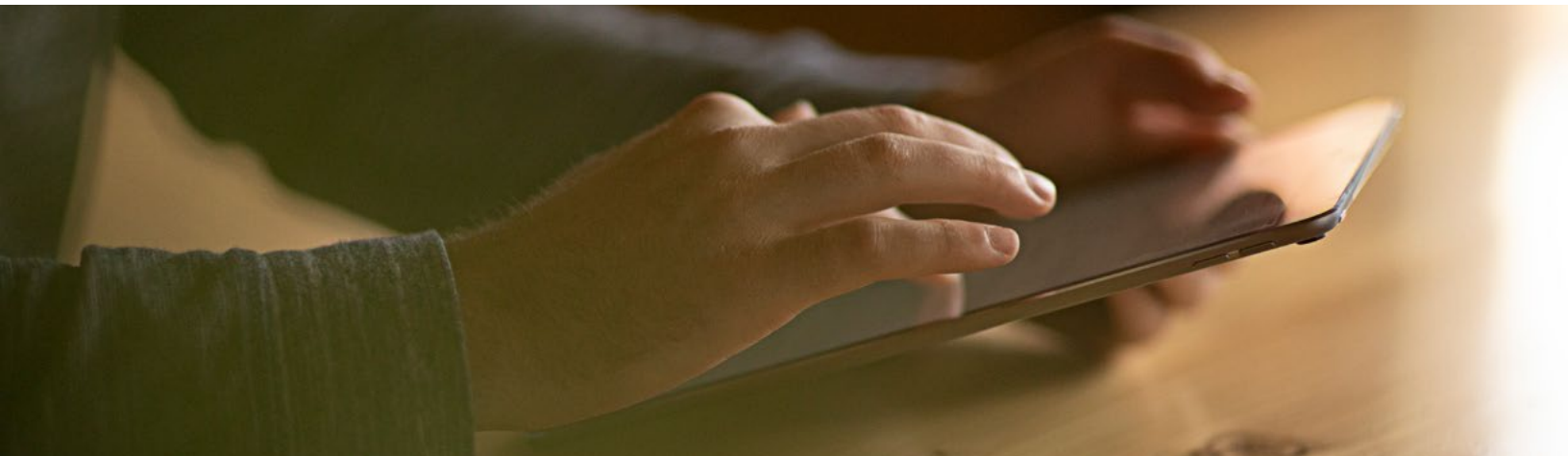
What's covered?

- Prerequisites prior to main delivery, with an initial discovery to confirm readiness
- Personalized training by a Jamf Pro expert using remote connection tools
- Configuration and setup of your Jamf Pro instance
- Hands-on training on features and functionality specific to your needs
- Workflow fundamentals
 - Testing and advising on the best iOS/iPad enrollment strategies
 - Planning app deployment workflows
- Length of training:
 - iOS/tvOS: one session providing up to four hours of training
 - Also have macOS? You can add Jamf Pro Premium Onboarding – macOS, which provides up to eight hours of additional training.

For complex environments or customers needing extra assistance, you may purchase additional service days to help you achieve your goals.

Benefits

- A configured Jamf Pro environment for basic device deployment and basic app deployment
- The ability to enforce supported settings through configuration profiles
- Inventory reporting based on customer needs
- Knowledge on how to progress along your Apple Management journey with Jamf
- Additional discussion around scaling and long-term planning for Jamf Pro deployments
- A chance to review your plans and deployments with a Jamf expert



www.jamf.com

© copyright 2002–2022 Jamf. All rights reserved.

If you'd like to speak with our team about Jamf's Services,
please contact info@jamf.com