



# JSS Conduit User Guide

Version 2.31

JAMF Software, LLC  
© 2014 JAMF Software, LLC. All rights reserved.

JAMF Software has made all efforts to ensure that this guide is accurate.

JAMF Software  
301 4th Ave S Suite 1075  
Minneapolis, MN 55415-1039  
(612) 605-6625

Under the copyright laws, this publication may not be copied, in whole or in part, without the written consent of JAMF Software, LLC.

Java and Java trademarks are registered trademarks of Oracle and/or its affiliates.

Casper Suite, the JAMF Software logo, the JAMF Software Server (JSS), the JSS Conduit, and the Recon Suite are trademarks of JAMF Software, LLC in the United States and other countries.

Linux is the registered trademark of Linus Torvalds in the U.S. and other countries.

Mac is a registered trademark of Apple Inc., registered in the U.S. and other countries.

Microsoft and Windows are registered trademarks of Microsoft Corporation in the United States and/or other countries.

All other product and service names mentioned are the trademarks of their respective companies.

# Contents

Page 4	Overview
Page 4	Requirements
Page 4	Installing the JSS Conduit
Page 5	Upgrading the JSS Conduit
Page 5	Exporting Data with the JSS Conduit Manually Exporting Data Automatically Exporting Data
Page 7	Viewing Export Logs
Page 8	Troubleshooting Connection Issues
Page 9	Release History

# Overview

The JSS Conduit uses plug-ins to export inventory data from the JSS to other system management tools, or vice versa.

## Requirements

The JSS Conduit can be installed on any Mac, Linux, or Windows operating system running Java Runtime Environment (JRE) v1.6 or later.

Exporting data using the JSS Conduit requires:

- One or more plug-ins installed in the JSS Conduit
  - The JSS v8.0 or later
  - Computers and/or mobile devices in the JSS
  - A JSS user account with privileges to read computers and mobile devices
- For instructions on granting privileges to JSS user accounts, see the *Casper Suite Administrator's Guide*.
- Note:** If you are using the JSS v8.7 or earlier, these privileges are API privileges.

There may be additional requirements, depending on the plug-in(s) that you plan to use with the JSS Conduit. For more information, see the documentation for the plug-in(s) you want to use.

## Installing the JSS Conduit

1. Extract the JSS Conduit ZIP file.
2. Copy the JSS Conduit folder to the location where other programs or applications are stored on the operating system.

For example, on Windows, copy the folder to C:\Program Files. On Mac OS X, copy it to the Applications folder.

After installing the JSS Conduit, you can install and set up plug-in instance(s). For detailed instructions, see the documentation for the plug-in(s) you want to use.

# Upgrading the JSS Conduit

1. Drag the Settings folder and the Plugins folder located in /path/to/JSS Conduit/resources/ to your desktop.
2. Remove the JSS Conduit application that is currently installed on your computer by deleting the JSS Conduit folder.
3. Extract the new JSS Conduit ZIP file.
4. Drag the Settings folder from your desktop to the JSS Conduit folder.
5. Copy the JSS Conduit folder to the location where other programs are stored on the operating system. For example, on Windows, copy the folder to C:\Program Files. On Mac OS X, copy it to the Applications folder.
6. If you have an export schedule, open the JSS Conduit (JSSConduit.jar) and verify that it is still correct.

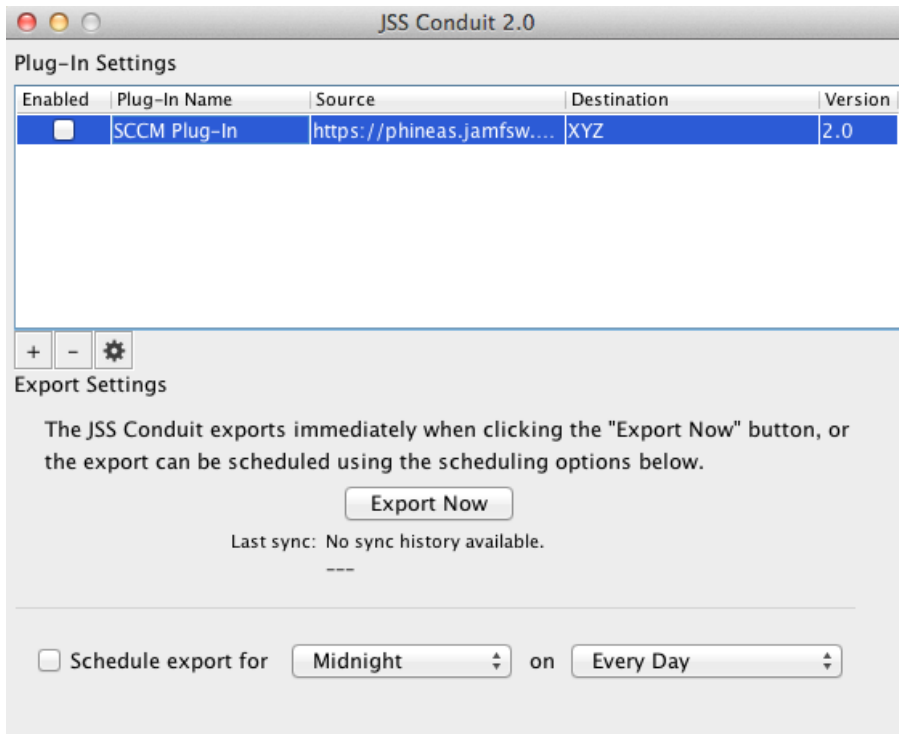
## Exporting Data with the JSS Conduit

You can manually export data with the JSS Conduit, or automate exports to occur on a schedule.

### Manually Exporting Data

1. Open the JSS Conduit (JSSConduit.jar).
2. If prompted, enter credentials for a local administrator account and click **OK**.
3. If you have not already done so, install and set up the plug-in instance(s) you want to use. For detailed instructions, see the documentation for the plug-in(s) you want to use.

4. Enable the plug-in instance(s) you want to use by selecting the checkbox(es) next to the plug-in instance(s), and then click **Export Now**.



The time it takes to export data depends on the number of records in the JSS, the amount of data in each record, and the speed of the servers running the JSS and the JSS Conduit.

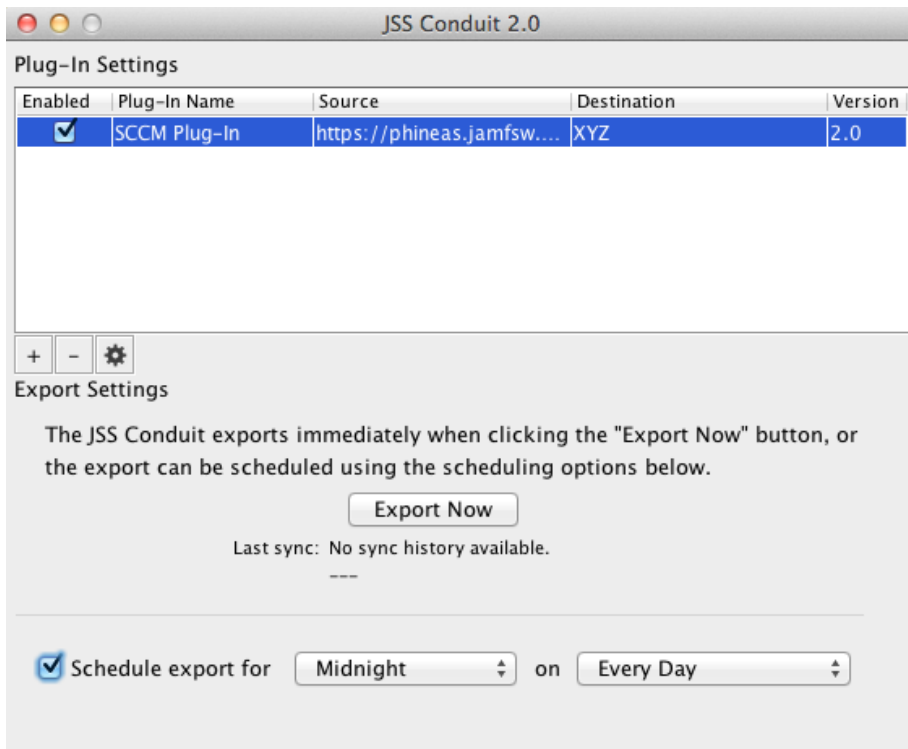
The status of the export is displayed below the **Export Now** button.

## Automatically Exporting Data

**Note:** If you plan to export data automatically, it is recommended that you export data manually before creating an automated schedule. This allows you to verify that the plug-in instance is running correctly. See "Manually Exporting Data" for detailed instructions.

1. Open the JSS Conduit (JSSConduit.jar).
2. If prompted, enter credentials for a local administrator account and click **OK**.
3. If you have not already done so, install and set up the plug-in instance(s) you want to use. For detailed instructions, see the documentation for the plug-in(s) you want to use.
4. Enable the plug-in instance(s) you want to use by selecting the checkbox(es) next to the plug-in instance(s).
5. Select **Schedule export for**.

- Set an export schedule by choosing an hour and day from the pop-up menus.



Exports occur at the time and frequency specified.

The time it takes to export data depends on the number of records in the JSS, the amount of data in each record, and the speed of the servers running the JSS and plug-in(s).

## Viewing Export Logs

The JSS Conduit logs all exports whether they are run manually or automatically. Each log shows the activities and errors that took place during the export, and a timestamp for each activity.

Logs are stored in `/path/to/JSSConduit/resources/logs`.

# Troubleshooting Connection Issues

If the JSS Conduit is unable to connect to the JSS, the following error is displayed when you try to export data:



Connection issues occur when a plug-in instance attempts to connect to the JSS with:

- An invalid or incomplete address to connect to the JSS
- An incorrect password for the JSS
- A JSS user account that has insufficient privileges

1. Open a web browser and attempt to connect to the JSS.

If the connection fails, the address of the JSS may be invalid or incomplete. Try running the JSS Conduit again using a valid JSS address.

2. Log in with the credentials that you used to set up the plug-in instance.

If you cannot log in to the JSS, the JSS credentials may be incorrect. Try exporting data again using valid credentials.

3. Use the JSS to verify that the account you logged in with has privileges to read computers and mobile devices.



# Release History

Version	Changes
v2.31	The JSS Conduit now uses Transport Layer Security (TLS) v1.0, and does not use Secure Sockets Layer (SSL) v3.0.
v2.3	<ul style="list-style-type: none"><li>▪ Added support for the JSS v9.4 or later</li><li>▪ Added support for the SIS Importer v1.3</li></ul>
v2.2	Added support for the JSS v9.0 or later
v2.1	Added support for the JSS v8.7
v2.0	<ul style="list-style-type: none"><li>▪ Increased speed and decreased memory usage.</li><li>▪ Added support for plug-ins that can move data both to and from the JSS.</li><li>▪ Added the ability to use multiple instances of the same plug-in.</li><li>▪ Added support for any type of data supported by the JSS API.</li><li>▪ Improved the ability to handle data with special characters and invalid XML.</li><li>▪ Added the date and time of the last successful scheduled export to the interface.</li><li>▪ The JSS Conduit now prompts a user to verify whether or not the application should exit if a manual export is in progress.</li><li>▪ The JSS Conduit now verifies plug-in instance settings before exporting and displays an error if a plug-in instance has invalid settings.</li><li>▪ Fixed an issue that prevented the automation of the JSS Conduit on Linux.</li><li>▪ Fixed an issue that caused scheduled exports to fail on Linux platforms if there is a space in the JSS Conduit path.</li><li>▪ Fixed an issue that caused the JSS Conduit to incorrectly report that an export was successful.</li><li>▪ Fixed an issue that caused messages about the JSS Conduit to appear when the JSS Conduit is not running.</li></ul>