

How to Turn K-12 Device Deployments Into Meaningful Learning Tools

Giving students access to internet-enabled devices can feel like giving children free rein in a candy store: disruptive and troublesome. After all, not everything online is healthy — and unrestrained device access arguably isn't either. But with careful planning and implementation, technology in schools can be nourishing.

Students have widely differing needs, and teachers can't meet them all at once. Managing the complexities of a dynamic classroom is a challenge for educators to juggle. While an incomplete substitute for human interaction, technology can fill many of these gaps, especially when AI-assisted. Selecting classroom technology that supports students' needs and assists teachers can:

- ✓ **Influence and accelerate learning**
- ✓ **Create equitable student opportunities**
- ✓ **Ensure secure and scalable deployments**

This means everyone wins. But how do we get there?
How do we ensure the great work IT does is used in the classroom and impacts learning outcomes?

Purposeful deployment: where every user has access to personalized devices that are private and secure — empowering students and teachers alike.



Purposeful technology requires IT management and support

Some districts and schools have enough funding to fully staff their IT and security teams, support teachers and aides, fund extra student activities and more. Others scrape by with teachers, staff and other admins wearing many hats to support their student body. Despite their differences, all schools want their students to succeed.

The right technology can help. With limited resources, choosing software and devices that have the most impact is crucial. Optimizing this impact in the classroom starts with how IT manages technology. What does that look like?

Mobile device management is the foundation. With it, schools can ensure devices are used appropriately and securely. With Jamf School and the native functionality of Apple hardware, IT admins can:

- ✓ **Deploy apps and devices easily**
- ✓ **Integrate with security and content filtering tools**
- ✓ **Manage network connectivity**
- ✓ **Support classrooms and empower teachers with tools built for education**

These features enable intentional, purpose-driven technology implementation. They support learning, help teachers manage classrooms and administrative tasks and keep students safe and on track.



Finding purpose

Purpose can look different depending on your school's capabilities and student body.

Purpose is the difference between tossing out handfuls of candy and providing balanced, nutritious meals. The latter requires more planning and consideration of a person's needs. Deploying devices with purpose supports the end user and meets them where they are.

Start by asking these questions to identify how you can support learning:

How confidently can end users use **technology**?

Where will devices **be used** — at home, at school or both?

How will **devices** fulfill curriculum needs?

What is the process for deploying **curriculum-focused apps** throughout the school year?

How can you **empower students** and **teachers** to use devices to meet their needs?



Answering these questions can make your device deployment strategy as impactful as possible, benefiting your entire user base.

Jamf can **help**. How? Let's get into it.

Empower the teacher

Confidently integrate devices into lessons.

Without guidance, devices can disrupt learning. A tool like Jamf Teacher lets educators manage classroom devices, limit features and apps, and lock screens when needed—keeping tech focused on learning, not entertainment.

Focus learning with the right tools.

Teachers should have control of which apps and sites students access, reducing distractions and keeping learning aligned with the lesson—saving time and boosting focus.

Lesson templates make device configuration a breeze.

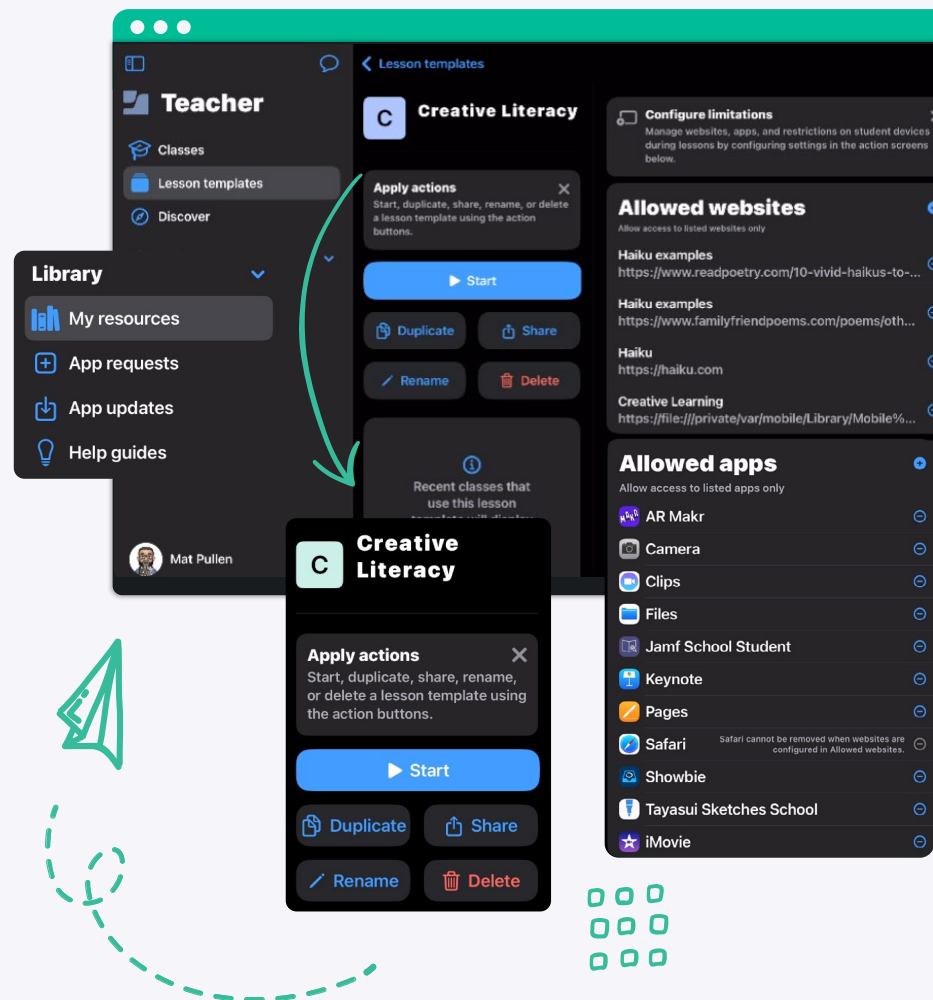
Lesson templates make it easy to configure devices for specific lessons. Teachers choose apps, sites and features for each lesson, then deploy templates to student devices in seconds.

Message students to support them wherever they are.

Not every student learns or needs support in the same way. If teachers sense students are struggling, they can send them a message or answer any questions the student may ask.

Share and request classroom resources.

Teachers can push apps and materials to students, enable safe browsing and easily request new tools from IT—no extra forms required.



Engage the student

Easily personalized devices meet every learner's needs.

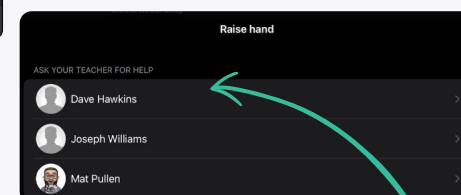
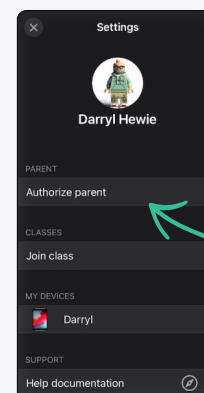
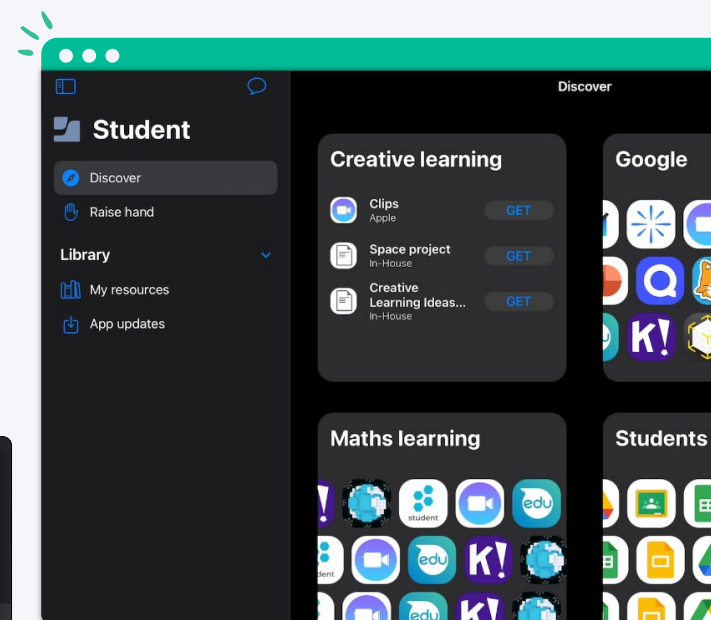
Devices are highly customizable and can adapt to students' differing needs. If a student needs accessibility features like magnifiers or screen readers, devices can provide this for them. If students learn best with games or need extra time to review material, devices can be an excellent aid. All this levels the playing field.

Students can ask for support without feeling vulnerable.

When students feel behind their classmates, it can be uncomfortable to ask for help. With Jamf, students can privately message their teacher for assistance.

Independent, safe browsing builds digital citizenship.

With content filtering, students can browse the web independently without putting themselves at risk. And since teachers can add resources to student devices, whether it's apps, books or other documents, students can download these resources as needed. This teaches students how to find information with their devices without overtly restricting their usage.



Equip the parent

Manage student's device once they're home.

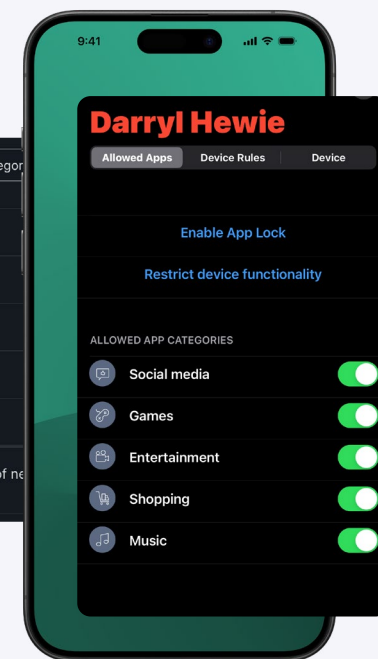
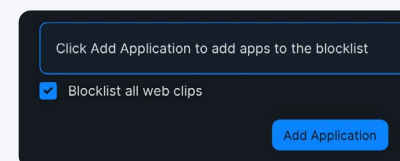
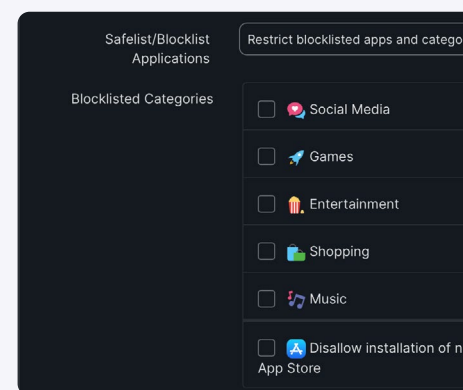
Learning — and device usage — doesn't stop at the dismissal bell. Once devices are home, parents gain control over how they're used. They can restrict or allow specific app categories, like entertainment or social media, and prevent access to certain websites. This way, parents can help their students stay focused on schoolwork or unwind once they're done.

Trust devices are used for their intended purpose.

Beyond the ability to set device restrictions, parents and guardians can trust that their students' devices only allow access to safe websites. With on-device content filtering on iPad, students are protected from malware, phishing attacks and inappropriate content — even when they're away from the school network.



Website filtering



Learning comes to life in the education **app ecosystem**

Manage and secure:

Apple devices managed by MDM provides a strong foundation for teachers and students to thrive.

Apple's wealth of accessibility features, applications, services and configurations make Apple devices a great solution for learning. And with Jamf, teachers, parents and students can rely on their devices as safe and effective tools for teaching and learning customized to their needs.

Engage and empower:

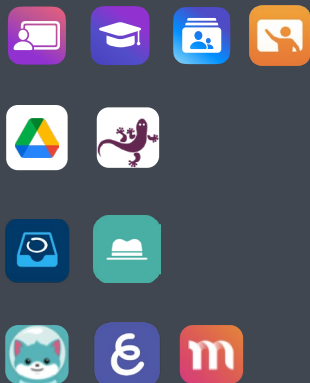
The ecosystem of education apps available takes learning to the next level.

With access to IT's curated set of applications, administrators and teachers can customize work, curriculum and learning to fit their specific purposes, like promoting literacy with literary apps, enable assessments and meet government goals and regulations. Jamf and Apple make it easy to integrate these apps with your classroom devices.

That's what delivering a purposeful deployment strategy is all about.

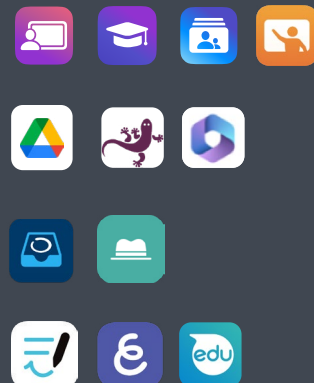
Primary

K-5



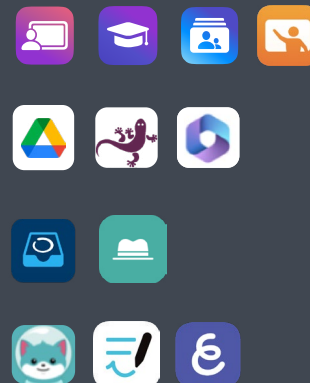
Secondary

Middle, High



Trust

District



**Manage
and Secure**

**Engage and
Empower**

Symbiotic tools for classroom **management**



Jamf Teacher

Class preparation

- Use lesson templates to customize devices for your lessons
- Set up devices how students learn best whether they're 1:1 or shared devices

Student focus and engagement

- Restrict apps, websites or other device features to keep focus on learning
- Disable features like spell check, autocorrect or Apple Intelligence to check competencies and set learning goals
- Capture attention by locking student devices and showing an attention screen
- Write messages to individual students or groups



Jamf Student

Class preparation

- Quickly access resources provided by the teacher
- Sign into shared devices for personalized configurations

Student focus and engagement

- Browse the web safely for independent learning
- Message teachers for clarification or assistance
- Stay focused with class-specific resources and configurations
- Learn how you learn best with a host of available apps and resources



Apple Classroom

Class preparation

- Share files between students and teachers, like worksheets, presentations, instructions and class assignments
- View summaries of how students spend their time during a lesson and adapt accordingly

Student focus and engagement

- Showcase student work on an Apple TV to encourage collaboration
- Launch or lock apps based on your lessons for dynamic device interaction
- Monitor student progress by viewing each learner's screen

IT-supported **devices** that bring **learning** to life

A successful device deployment emphasizes the success of its users. For schools, this means enhancing and optimizing the classroom experience for teachers and students. Part of this is device management: how devices are maintained by IT. Another part is security: how devices are kept free from cyber threats.

Many schools stop here. But this neglects the impact devices have in the classroom. If schools want to influence learning outcomes and create equitable learning opportunities, they should consider device features and the tools that support these devices.

With Jamf and Apple:

- ✓ IT admins support devices with direct influences on learning.
- ✓ Teachers have more control over their students' learning experiences.
- ✓ Students can learn the way they learn best with personalized devices that meet their needs.

Bring IT's **influence** to the classroom
and see impactful technology in action.

Try Jamf today

