

# How to Build a Purpose-Driven Device Management Strategy for K-12



Technology, despite not having feelings itself, can sure invoke them in us. Whether we're tickled by our favorite shows or frustrated by a bothersome self-checkout, we have to agree on one thing: technology isn't going away.

Our impressions and interactions with tech start early. The software and devices used in schools affect the way students — our future adults — learn and operate.

As Dan Schwartz, dean of Stanford Graduate School of Education says,

Technology is a game-changer for education – it offers the prospect of universal access to high-quality learning experiences, and it creates fundamentally new ways of teaching.

This doesn't come free. With the surge of AI and other technologies, it's a crucial time to take a careful look at technology's role in the classroom. It can be too easy to allow tech to replace teaching it should not, and to underutilize it where it can be most helpful.

# Technology requires intention

It's for this reason that technology needs to be chosen and deployed with a **purpose**. Tech is powerful — when you use it with careful intention, planning and vision, you can achieve success greater than the sum of its features. This way, tech can:

- Influence and accelerate learning
- Create equitable student opportunities
- Ensure secure and scalable deployment

## **Does your school's technology — including the software, devices, policies, usage and distribution — help meet learner's needs?**

Let's explore some potential partial solutions. As the first of three e-books on **purposeful deployment**, we'll take a look at how device management with an intention impacts learning outcomes. With purpose-driven technology in schools, we aim to ensure:

- ✓ Every student and teacher
- ✓ Has equitable access to personalized devices
- ✓ That deliver security and privacy
- ✓ To empower their success

# The foundations of **purposeful** device management

Many schools choose Apple devices, due to their diverse set of apps, built-in accessibility features, security and functionality. Managing your school's Apple devices throughout their lifecycle involves their deployment, maintenance, security and user experience — each part of the process should be optimized for successful management.

Let's break down some core components of management:

**Deployment:**  
Getting devices to  
your end users



**Configuration:** Ensuring  
devices have the necessary  
restrictions and settings



**Inventory management:** Keeping track of  
each device's status



**Application management:** Distributing the  
appropriate software and keeping it up to date



**Security:** Keeping  
devices compliant with  
administration standards



**User empowerment:**  
Enabling users to get the most  
out of their device, including the  
ability to self-help when needed

# So what software **features** help achieve these components?

This can be a complex process, especially with a large device fleet. To manage your Apple devices, alongside your Mobile Device Management (MDM) solution you'll need:



## Apple School Manager

Apple School Manager (ABM) is a web-based portal that interfaces with your MDM. With ABM, admins can volume purchase content like software, devices, apps, books and more.



## Apps and Books

Through Apple School Manager, admins can volume purchase apps and books. These can be delivered to users based on their Managed Apple ID.



## Device supervision

Device supervision gives IT admins more control over their devices, allowing them to silently install or block apps, put devices in Managed Lost Mode and more.



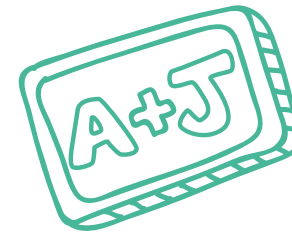
## Shared iPad

With Shared iPad, Students can share iPads seamlessly, logging into their Managed Apple ID to access their apps, content and work.



## Managed Apple IDs

Apple IDs allow users to access Apple services like iCloud, the App Store, iMessage and more. When you create these IDs through Apple School Manager, they become Managed Apple IDs, giving IT more control of the accounts — including integration with your student information system.



# How do those features contribute to a purposeful deployment?

This can be a complex process, especially with a large device fleet. To manage your Apple devices, alongside your Mobile Device Management (MDM) solution you'll need a strategy that provides and accounts for:

## Control:

IT maintains control over school-owned devices, ensuring they stay secure, updated and equipped with necessary features. Lost Mode safeguards devices and data if stolen, while students benefit from protected data and safe, restricted content access.

## Convenience:

Device management is easier for IT, saving admins time and effort with easy purchasing, content deployment and remote control. This means admins can spend more time on enhancing the classroom experience and less on making sure devices are working.

## Rich content options:

Students get access to approved apps, services and content with their Managed Apple IDs and via management controls. With a host of apps and books readily available, you've built a unique solution that's ready to meet unique learner needs.

## Devices for everyone:

These features make it easy to get Apple devices into the hands of everyone. Apple devices, with accessibility features, ensure equitable learning for all. Shared iPad puts devices in every student's hands, supporting carts, limited devices, or 1:1 programs across any deployment model

# Finding **purpose**

We've talked about how important it is to have a purpose when choosing your school's technology.

## But what does that mean **exactly**?

Tech is just 0s and 1s without the people behind it — it's meant to make our lives better. Everyone, regardless of their skills and abilities, should be able to access tech that helps them meet their unique needs.

Standard device management isn't enough anymore if devices aren't fit for purpose and easy to use. Educators must have the power to integrate technology into their lessons in a way that helps their students thrive. **Personalization is key here** — each user has their own unique needs, and technology should work with them for the best learning experience, driving accessibility and equity. **This fuels our purpose, but how can we define "purposes" clearly?**

## Consider:

1. Who are the **primary users** of the devices you're managing?

2. How will they **use their devices**?

5. Are devices set up to **enable students and staff** to learn and teach safely and securely?

3. Where will their devices be used — **Classroom only** or **beyond the school grounds**?

4. How **confident** are they with **technology**?

By answering these questions, admins can start understanding the role the devices they manage play in the classroom and **beyond**. By understanding this, they map the different needs and purposes of their deployments.

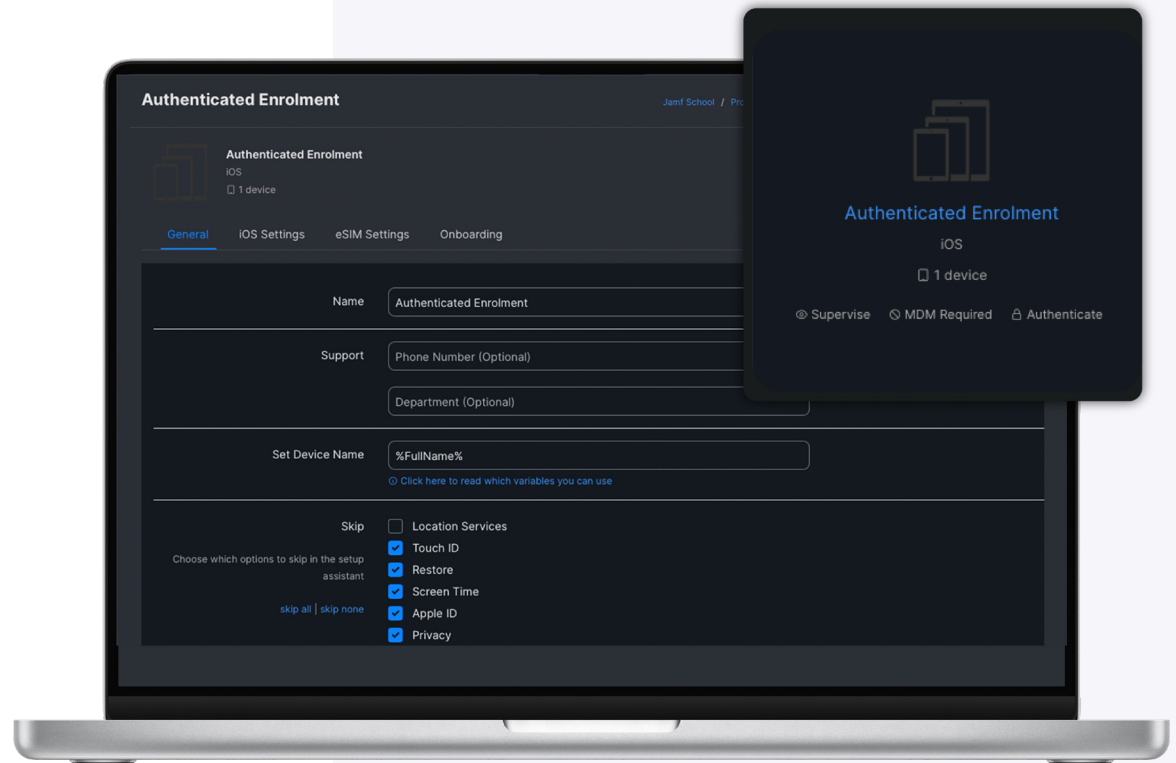
# Devices that are ready for action

## Zero-Touch Deployments

Getting devices in the hands of students and teachers isn't a simple task. Historically, admins had to handle each device to wipe, reenroll, then reconfigure. If you have hundreds or thousands of these devices, you're in for a lot of work.

When you use Jamf with Apple School Manager, it's possible to automatically enroll your devices into an MDM like Jamf School and set up the devices — all without having to touch the device. This means:

- Configuration and deployment is streamlined and efficient
- IT has more time to focus on more important tasks
- Devices can be given to learners and educators without delay





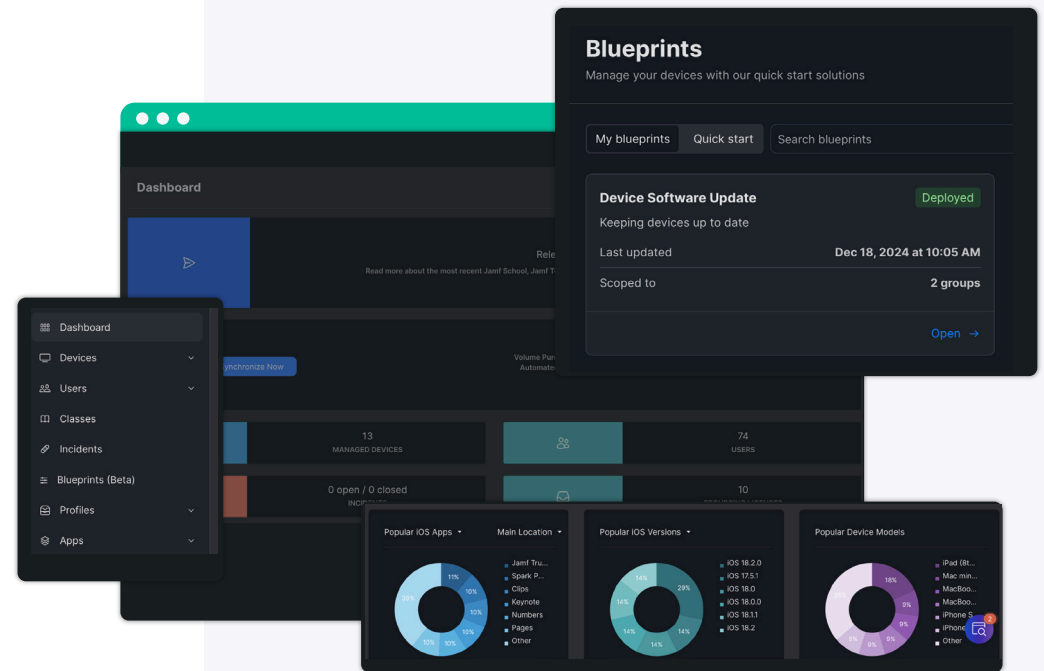
# Make updates in a flash

## Smart Groups and Blueprints

Device management doesn't stop after devices are initially set up and given to users. They need software updates, may need remediation in response to an incident or require configuration changes.

Admins need the flexibility to granularly configure devices in a convenient but powerful way. With Jamf, admins can scope changes to dynamic groups, based on attributes like device type, location, class, grade, operating system and more. And Jamf Blueprints make it easy to bundle applications, settings and restrictions without having to reinvent the wheel. With these features, admins can:

- Easily push software updates and changes
- Keep devices in compliance
- Reduce vulnerabilities



# The best apps, ready for learning

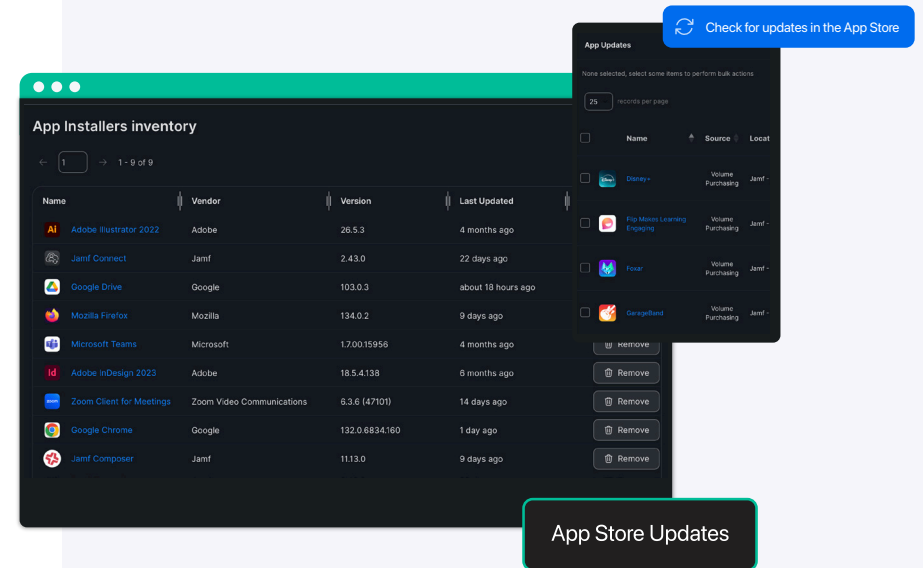
## Application Management and App Installers

There are a lot of apps out there and they are key to elevating the learning experience. With Jamf, it's easy to install and update apps that are:

- Volume purchased through Apple School Manager
- In the App Store
- Developed in-house
- Jamf-reviewed, third-party apps

While IT admins can certainly deploy these apps, the real impact comes from what teachers and students can do. From their device, they can navigate to the Jamf Teacher or Jamf Student app (included with Jamf) and install IT-approved apps. Teachers can add apps to all their students' devices simultaneously as well as easily request unavailable apps for IT approval. App management through Jamf School allows for:

- On-the-fly flexibility to cater apps for whatever the classroom demands
- Teachers to deploy approved apps without needing assistance from IT
- App deployment at the appropriate time, reducing distraction and keeping it relevant
- IT can ensure apps in use are up-to-date and secure



# Administration puts the **power** in teachers' hands

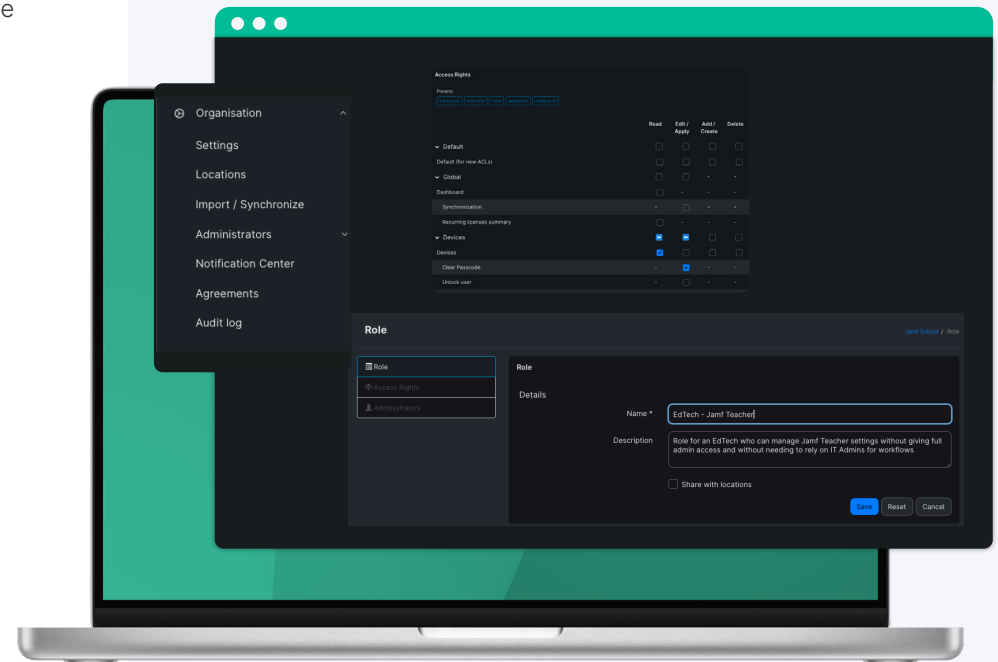
## Role-Based Admins

Device management can look very different from school to school. Some have sizable IT departments, some rely heavily on teachers and educational technicians, and some are right in between. With role-based administration, access rights and privileges can be catered directly for the relevant user. In Jamf School, Read, Edit/Apply, Add/Create and Delete permissions can be set for attributes like:

- Locking or wiping a device
- Clearing parent or teacher restrictions
- Modifying users and classes
- Managing apps
- Jamf Teacher settings

This returns device management to the classroom, resulting in:

- Less need for IT intervention while retaining IT control
- Granting educators more control over their students' devices
- Fewer interruptions from learning due to lack of access



# Devices that are team players

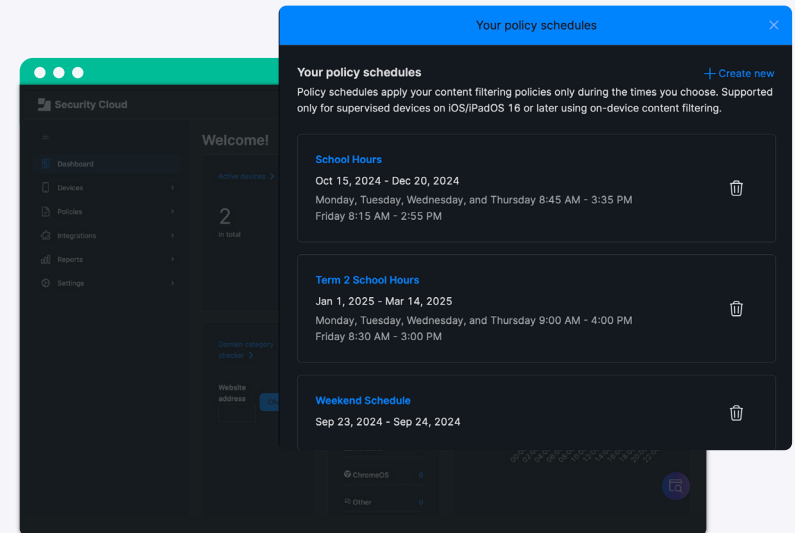
## Time-Based Profiles

With Jamf, devices don't have to be static boxes that deliver the same features until IT changes their settings. Teachers can schedule what features are available at what time — like delivering math-related educational games only during a math lesson or allowing access to entertainment after school hours.

This flexible feature makes for granular control of devices, as certain restrictions can be turned on or off at a scheduled time to keep an environment focused. They can be applied to specific user groups as appropriate and override preset restrictions if needed. Even at home, students' guardians can help them learn to manage their device usage, with settings in the Jamf Parent app.

Overall, this delivers:

- In-classroom control over devices' apps, access to content and configurations
- More freedom in device use when at home — like life after graduation
- Devices that work in tandem with a teacher's lesson, enhancing the experience
- Granting educators more control over their students' devices
- Fewer interruptions from learning due to lack of access



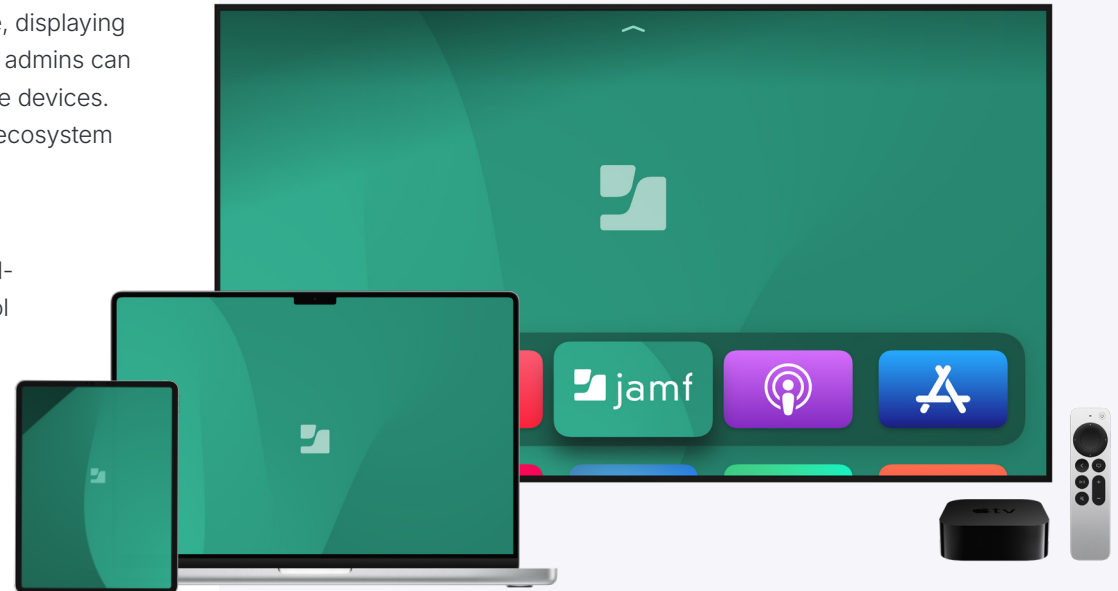
# Support for devices in the classroom — and out

## Multi-device support

Writing essays on Mac, playing educational games on iPad or iPhone, displaying announcements on cafeteria Apple TVs: it's all supported by Jamf. IT admins can appreciate an easy-to-use, centralized location to manage all of these devices. Students, teachers and administrators alike all benefit from a device ecosystem that works in harmony.

Have a unique use case? The Jamf Marketplace offers integrations with Jamf for digital signage, notetaking, social engagement and well-being, and so much more. With our multi-device support, your school benefits from:

- Simple device management from one location
- The option to choose devices that fit your applications and needs
- Powerful device management built specially for education
- Devices that work in tandem with a teacher's lesson, enhancing the experience
- Granting educators more control over their students' devices
- Fewer interruptions from learning due to lack of access

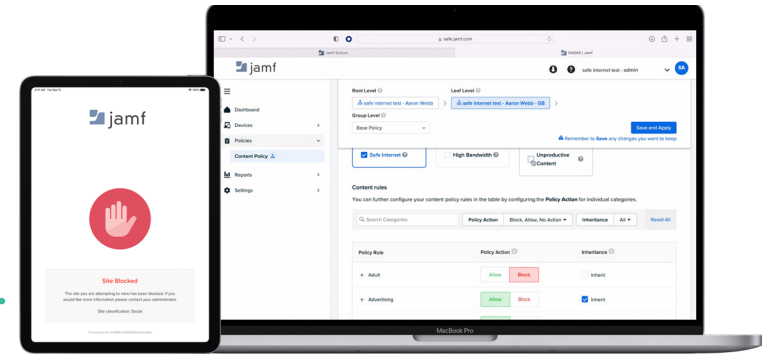


# Security and privacy

Device management is just one piece of your purposeful deployment puzzle. School devices hold a lot of information that needs protection. Keeping these devices secure is critical not just for your school's systems, but to protect students' futures. Data loss can lead to serious consequences for students, whether it's bullying from peers or stolen identities.

Schools are not surveillance states, and the software chosen should respect a students' privacy by default. Balancing security and privacy can feel more like a tightrope than a walk in the park.

Jamf Safe Internet and Jamf Protect can help you find your footing.



## Jamf Safe Internet for Mac and iPad:

### Network threat protection

Powered by our machine learning engine, MI:RIAM, Jamf Safe Internet prevents known threats to protect students from harmful websites and phishing attacks.

### Content filtering

Protect students from harmful and inappropriate online content — customized to their grade level and needs.

### On-device protection

Stay secure and away from unwanted content, even if devices are out of the school building.

### Privacy by default

By encrypting DNS traffic over HTTPS, access to malicious or unapproved websites is blocked — without revealing a user's browsing history. Students remain protected without violating their privacy.

### Better together

Jamf Safe Internet integrates with Jamf School, making deployment and syncing seamless.

## Jamf Protect for MacBooks:

### Endpoint security

Defend your MacBooks with comprehensive detection and prevention for Apple-specific attacks.

### SIEM compatibility

View your unified logging and telemetry data in Jamf Protect, or integrate with your SIEM/SOAR for centralized visibility.

### Compliance and visibility

Keep devices compliant with customizable benchmark reporting and rich telemetry.

# Jamf Classroom apps

IT's transformative work shouldn't stop at the classroom door! Add value and feel IT's influence on learning outcomes with Jamf apps.



## Jamf Teacher

Cater student devices to lessons by allowing or blocking access to apps, websites and the camera. Regain focus and engagement with student messaging and by locking all devices at once.



## Jamf Student

Students retain appropriate autonomy over their devices, helping them work in tandem with their devices and enhance learning.



## Jamf Parent

Parents can limit apps and devices functionality on their students' devices, helping them stay focused on learning when appropriate.

When integrated with Apple Classroom and your MDM like Jamf School get next level:

### Classroom preparation:

Individualize lessons for groups or specific students and share them between students and/or teachers.

### Communication:

Hold class anywhere, write messages to students, and read class summaries to stay on top of student progress.

### Focus and engagement:

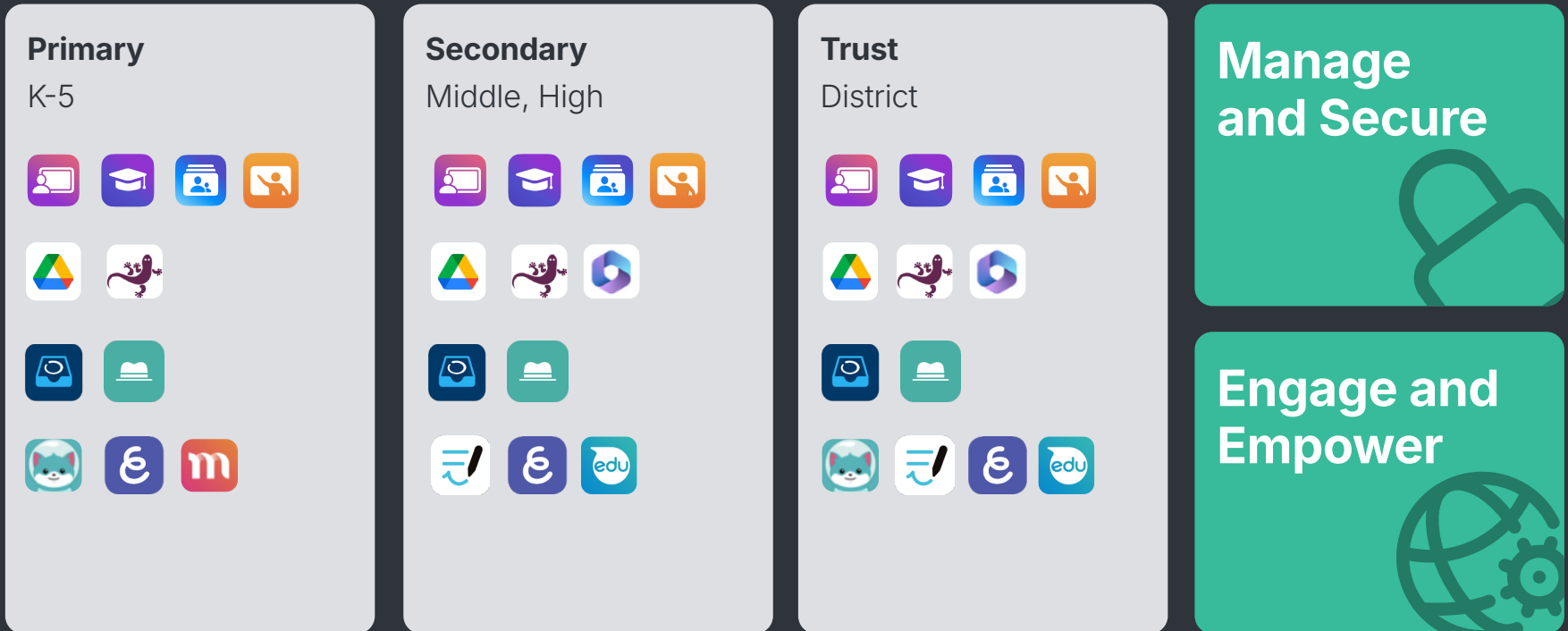
Restrict access to device features and content, offer engaging Apple Books and apps, and showcase student work on Apple TV.

# Models of Purposeful Deployment

When you ask and answer the right **questions to uncover the unique purposes behind your deployment**—whether it’s for students, teachers, or even specific age groups—you gain clarity on the personalized needs of every user.

With this insight, you can craft a deployment strategy that aligns your Apple MDM and security tools to meet these needs effectively. By mapping out these models, you can see how to deliver tailored solutions that empower your users and ensure technology works seamlessly for their unique goals.

Your purposeful deployment journey begins to look like this:





# Device management from the **help desk** to **school desk**

When you choose Apple and Jamf for your schools, students and educators get devices flexible and powerful enough to meet their unique needs.

With easy-to-setup enrollment and centralized management:

- IT benefits from simple administration that keeps devices in compliance and secure.
- Educators have the ability to control and configure their students' devices, no matter what their lessons or student progress demand from them on a given day.
- And everyone can rest assured that private data remains private.

Deliver the **purposeful deployment** your school and users need with ease!

Want to see for yourself what Jamf can do for your learners? Take a free test drive today.

Try Jamf today

