

● JAMF NATION LIVE

What's new with Enrollment and Platform SSO in 2026

Zero-touch to zero stress



Thomas Ortscheid
SALES ENGINEER



Armin Briegel
CONSULTING ENGINEER

Agenda

Enrollment Features and Options

Setup Manager
WebHooks/Setup Manager HUD
FileVault
Software Update

Platform SSO

Simplified Setup at Enrollment
Authenticated Guest Mode/Tap to login

User Experience

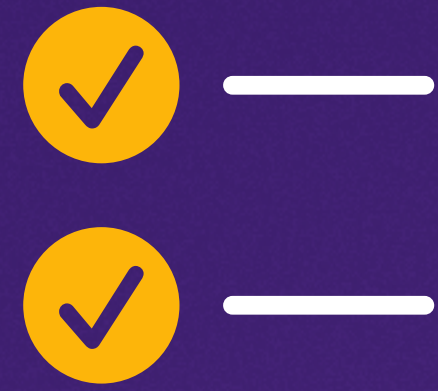
Managed Migration Assistant
Setup Checklist
Self Service Plus

Setup Manager

Manage your enrollment



Enrollment



Setup Assistant



User Creation



Productivity

Setup Manager



Jamf Connect



Self Service Plus



Managed Apps



PSSO



Security



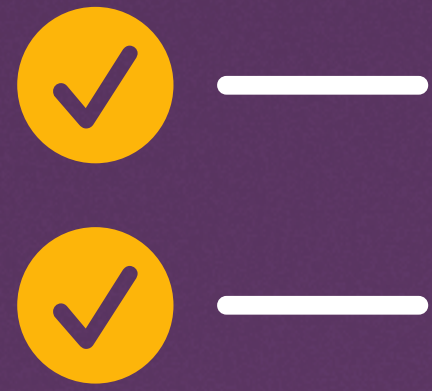
Compliance



Pre-provisioning



Enrollment



Setup Assistant

Setup Manager



Managed Apps



Security



Compliance



User Experience



User Creation



Productivity

Jamf Connect



PSSO



Self Service Plus

Demo



Device Management

Device management is required and will allow this organization to set up email and network accounts, install and configure apps, and manage the settings of this Mac.

This Mac is owned by:

JAMF Software

[Learn more about device management...](#)

Enroll

icon



title

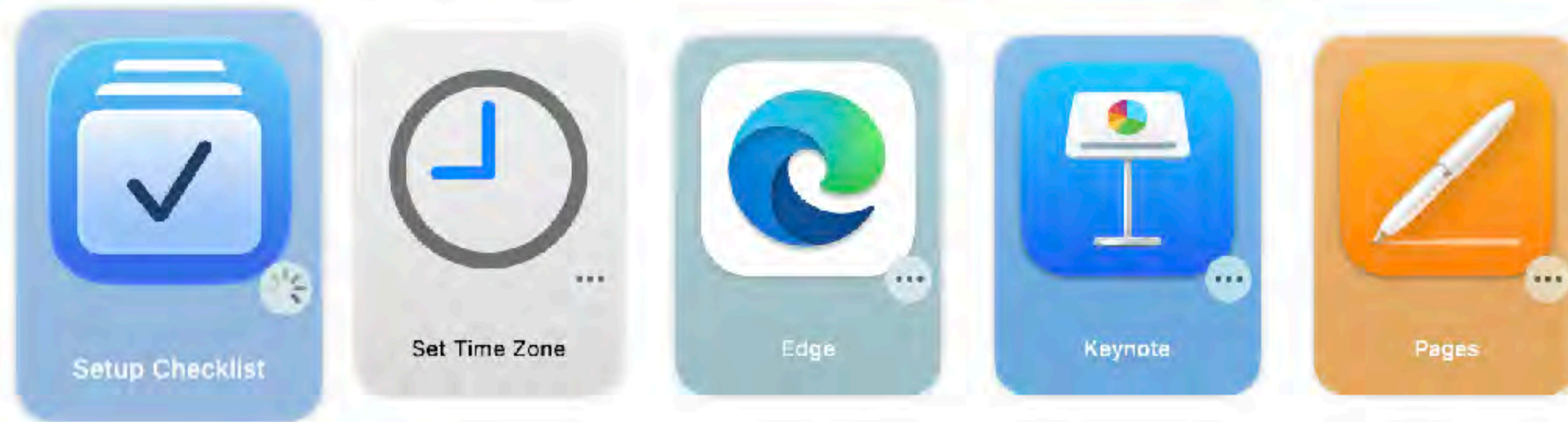
Welcome!

banner

message

Please be patient while Setup Manager configures your new MacBook Air.

actions



Setup Checklist (Step 1 of 11)

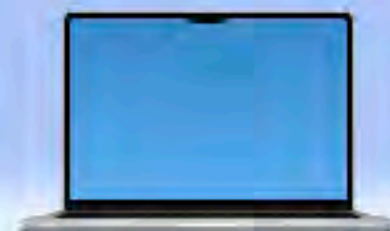
About this Mac...

Powered by Jamf



Welcome!

Please be patient while Setup Manager configures your new MacBook Air.



MacBook Air

M2, 2022

Chip Apple M2

Memory 16 GB

Disk Storage 494,38 GB

Serial number NCC-1701D

macOS Tahoe 26.0.0

Network ●

Download Speed 562,6 Mbps
Estimated download time for 1 GB is 17sec

Elapsed time 1 min, 3 sec

Setup Manager

Copyright © 2023-2025 Jamf
All rights reserved

[About this Mac...](#)



Company Portal ✓



Microsoft Teams ✓



Jamf Protect ✓



Check-in ✓



Finishing...

Powered by Jamf



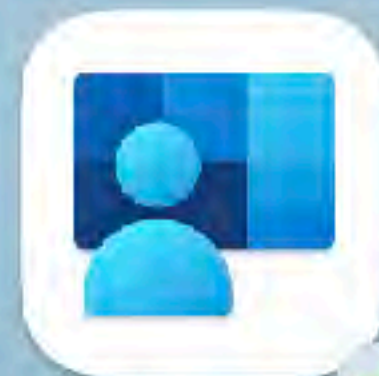


Welcome!

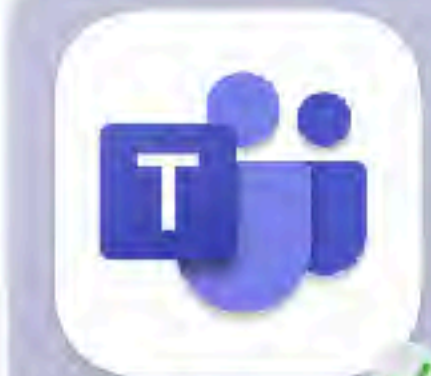
Please be patient while Setup Manager configures your new MacBook Air.



Jamf Connect



Company Portal



Microsoft Teams



Jamf Protect

Finished – Enjoy your MacBook Air!

[About this Mac...](#)

Continue

NETWORK

Wi-Fi

IPv4

192.168.1.159

IPv6

fe80::c5c:cea7:aff1:37dc%en0
2a02:8424:a460:6a01:103c:6da6:9d3:270e
2a02:8424:a460:6a01:78ae:e038:e1f6:25a3

BANDWIDTH

Download Speed

562,6 Mbps

Upload Speed

44,2 Mbps

Estimated download time for 1 GB is 17sec

NETWORK RELAY

✓ HTTP3/QUIC

✓ HTTP2

CONNECTIVITY

✓ Intranet Maps

map.wandera.com 443 tcp

✓ Scripting OS X

scriptingosx.com 443 tcp

✓ macadmins.news 443 tcp

Setup Manager Features

Modern and customizable UI



Customize several elements of Setup Manager's interface including banner images, text, labels and icons.

Localized in twelve languages.

Easy configuration



Native macOS app rather than a shell script. Configure it with a custom configuration profile or custom Jamf Pro schema, without having to edit complex shell scripts.

Deployment workflows compatibility



Set up enrollment with Jamf Pro policies, Installomator installations and Single line shell commands and watch for installations from the Mac App Store or the Jamf App Catalog. Prompt for additional information such as an asset tag or department.

Jamf Pro and Jamf School



App developed by Jamf experts and designed to integrate seamlessly with Jamf Pro and Jamf School.

Setup Manager Benefits

- Streamlined Deployment
- Customizable Workflows
- Simplified Management
- Increased Service Opportunities
- Compliance Assurance



Setup Manager Localization

 English

 Norwegian

 Dutch

 Polish

 French

 Portuguese

 German

 Spanish

 Hebrew

 Swedish

 Italian

 Turkish

Custom text localization in profile

● JAMF NATION LIVE



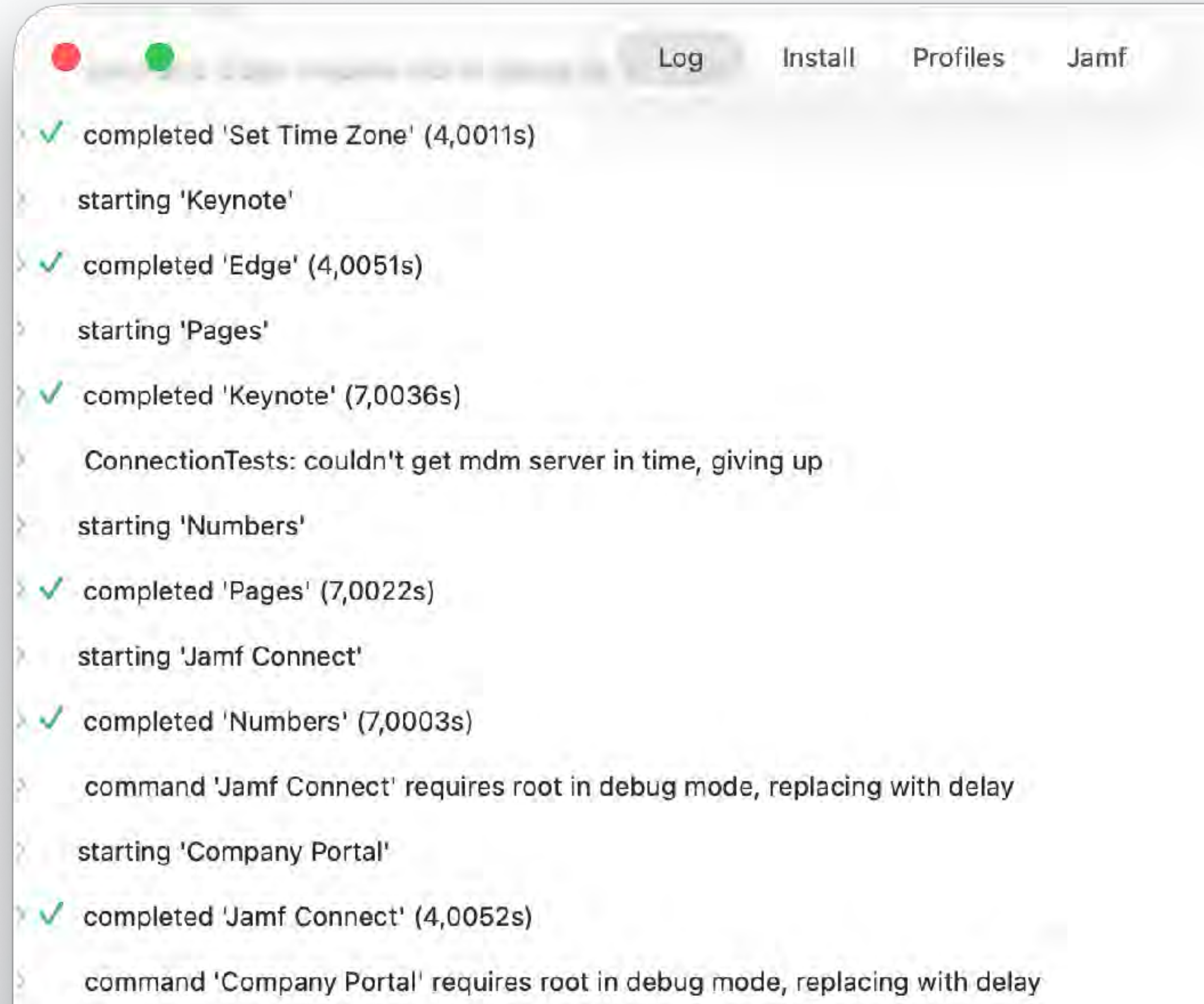
Setup Manager Logging and Troubleshooting

Logs to file and unified system log

Live Log window (command-L)

Replicated in Setup Manager log for unified timeline

- Package installations
- Jamf policy execution
- Configuration profile installations and removals
- Network changes



Setup Manager Web Hooks

Web hooks sent at start and finish

- hardware information
- actions with success/failure
- user entry data
- network bandwidth
- workflow duration

Slack and Teams web hooks

Generic web hook with json data

● **JAMF NATION LIVE**



Setup Manager APP 3:29 PM

Setup Manager: Finished

MacBook Pro (FVFGF3EBQ05P)

Details:

macOS Version: 26.5.0

macOS Build: 25F71

Setup Manager Version: 1.4.5 (646)

Jamf Pro Version: 11.28.1

Computer ID: 73

Serial Number: FVFGF3EBQ05P

Model Identifier: MacBookPro17,1

Computer Name: JNL26-GF3EBQ

Started: 2026-06-04T13:22:31Z

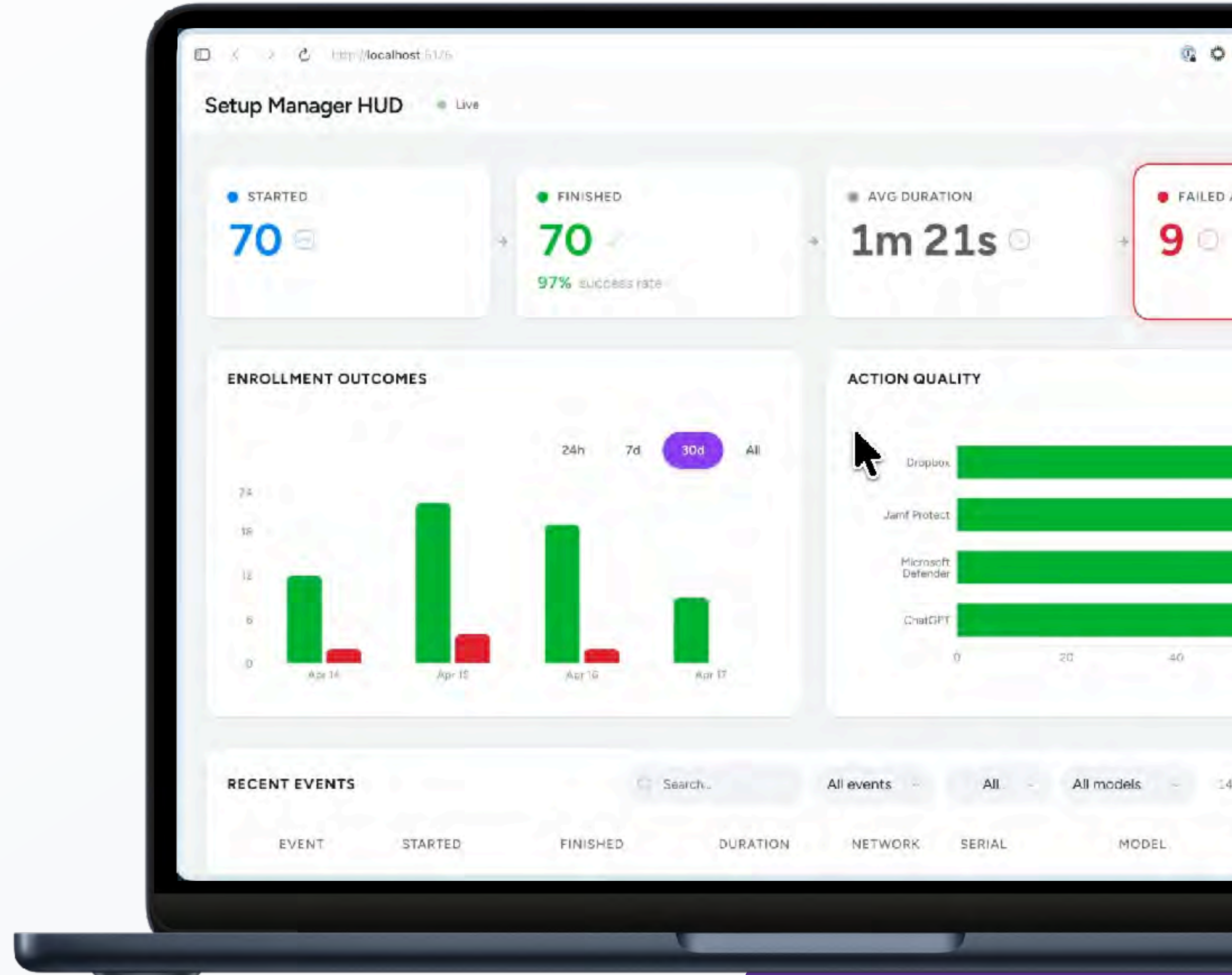
Finished: 2026-06-04T13:29:42Z

Duration: 431

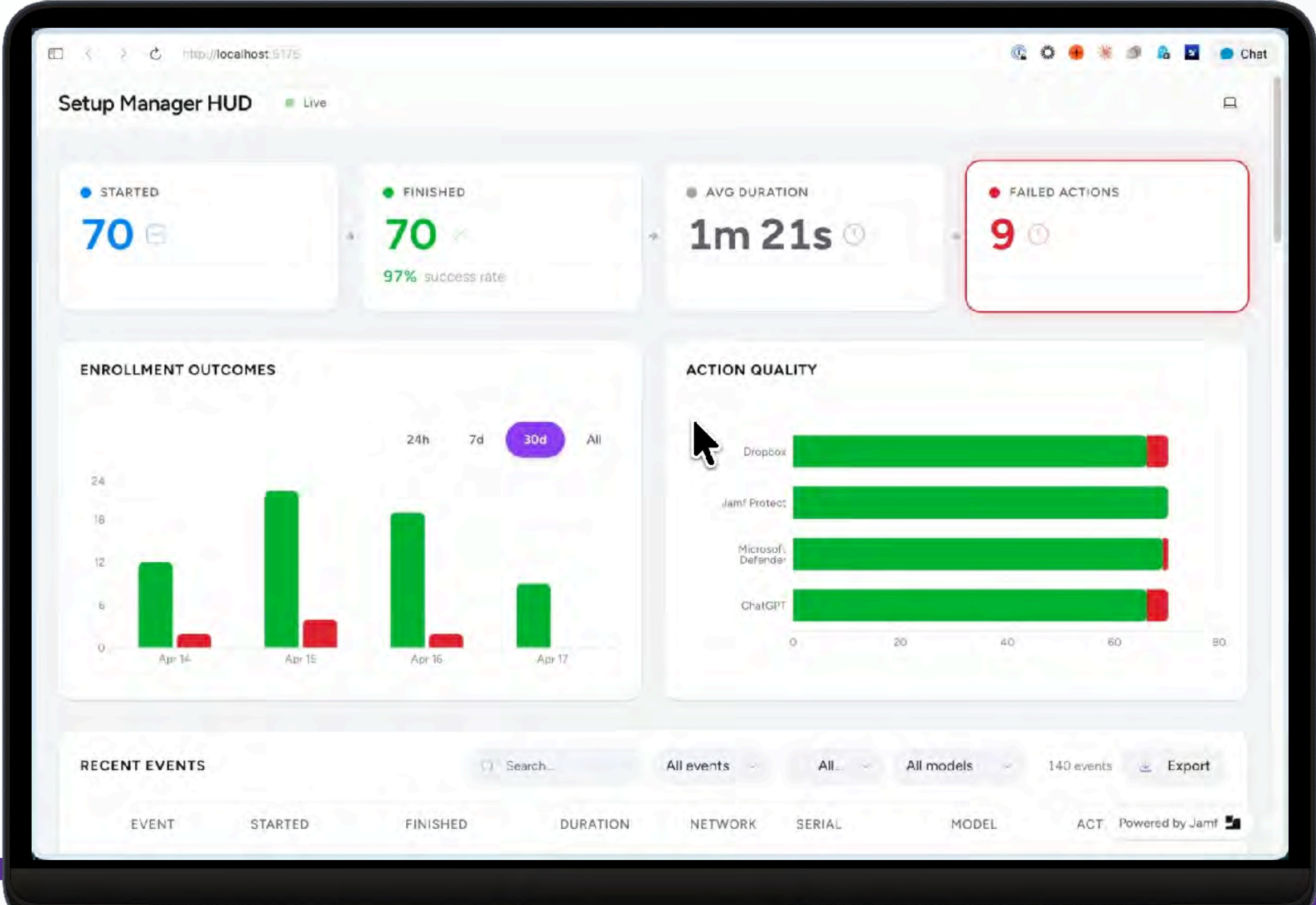
Download Throughput: 779,350,912

Setup Manager HUD

- Shows enrollments in real-time
- Tracks KPIs
- Displays event details
- Charts trends
- Filters and searches
- Speed of your deployments



Setup Ma

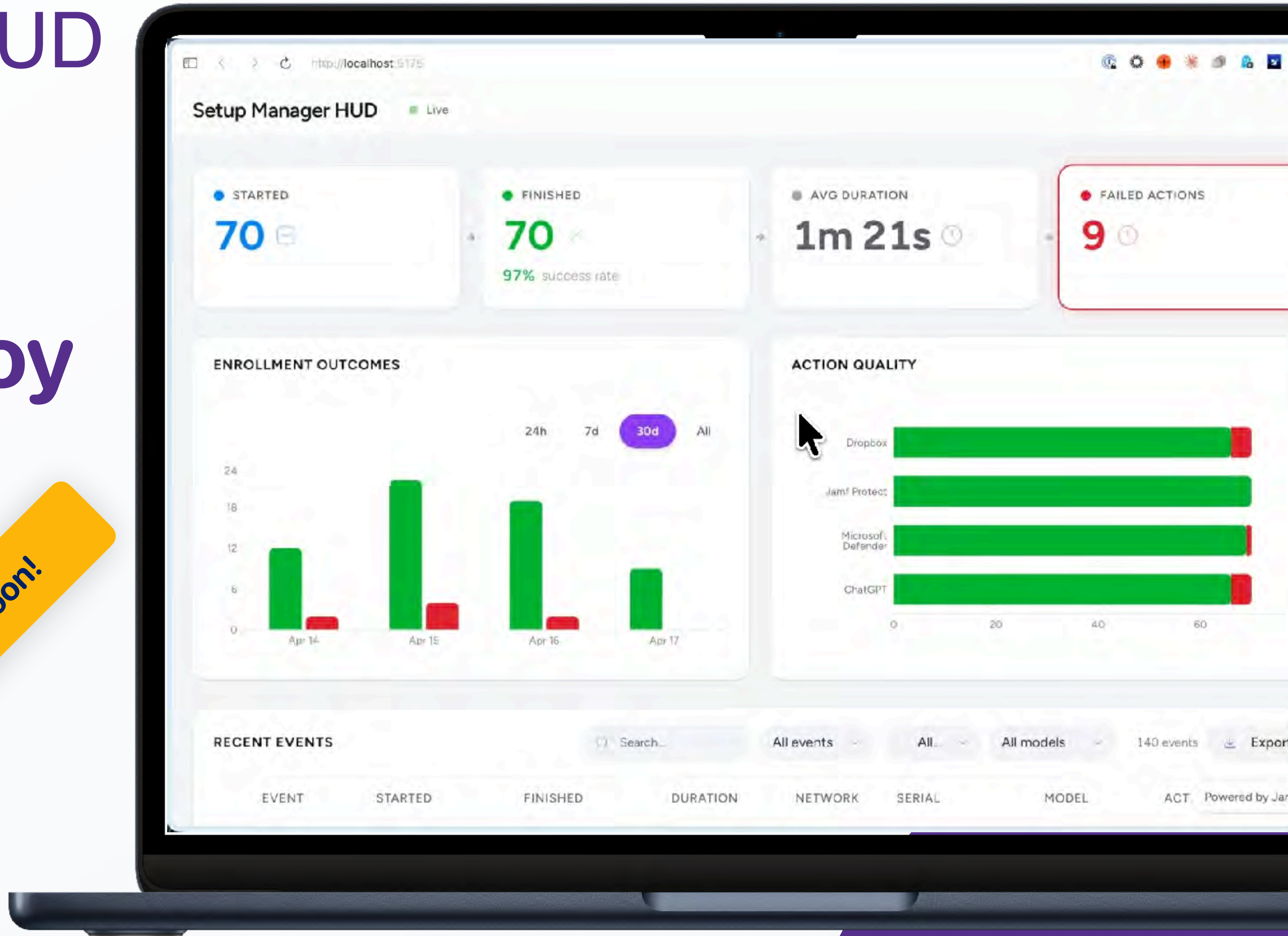


Setup Manager HUD

One-Click Deploy Cloudflare

 **Deploy to Cloudflare**

Coming Soon!

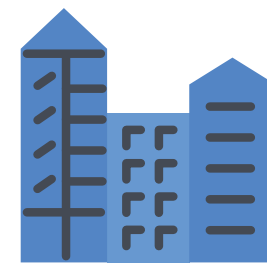


Use Cases and Industries



Pre-provisioning

Setup Manager enables IT admins to streamline VIP device deployment by automating configuration steps before the user is created, allowing IT to handle fully-configured, ready-to-use devices in seconds.



Regulated industries

Setup Manager helps IT admins in highly regulated industries maintain compliance by automating the deployment of critical apps and configurations during setup, ensuring all devices meet security and regulatory standards from the moment they are deployed.



Education

Setup Manager streamlines deployment workflows in education by allowing IT admins to automate device configuration and ensure student devices are fully prepared with the necessary apps and settings before being distributed, reducing setup time and errors.

Setup Manager



 jamf | PRO

 jamf | SCHOOL

jamf.it/setup-manager

Enrollment Options

Enrollment Options



Auto Advance



Minimum
OS Version



FileVault



Managed
Migration
Assistant



Platform SSO

Auto Advance



Ethernet connection

"clicks" through setup panes

Do not touch!



Minimum OS Version



Select Your Country or Region

- France
- Afghanistan
- Åland Islands
- Albania
- Algeria
- American Samoa
- Andorra
- Angola
- Anguilla
- Antarctica
- Antigua & Barbuda

Back Continue

Press the escape key to hear how to set up your Mac with VoiceOver.

Triple-click Touch ID to view accessibility options.



Select Your Country or Region

- France
- Afghanistan
- Åland Islands
- Albania
- Algeria
- American Samoa
- Andorra
- Angola
- Anguilla
- Antarctica
- Antigua & Barbuda

Continue

Press the escape key to hear how to set up your Mac with VoiceOver.
Triple-click Touch ID to view accessibility options.

Minimum OS Version



latest minor
latest major
based on device
specific

Auto Advance

Caching Server

 
14.4 17.0

FileVault



Write Down Your FileVault Recovery Key

Your organization has turned on FileVault for this Mac. FileVault secures information on your Mac by encrypting the data on your disk and requiring a system password to unlock the screen.

B4AX-9NN8-GXNK-22YN-OC5B-8ZLE

Apple does not have access to this key.

Continue

FileVault



Configuration profile

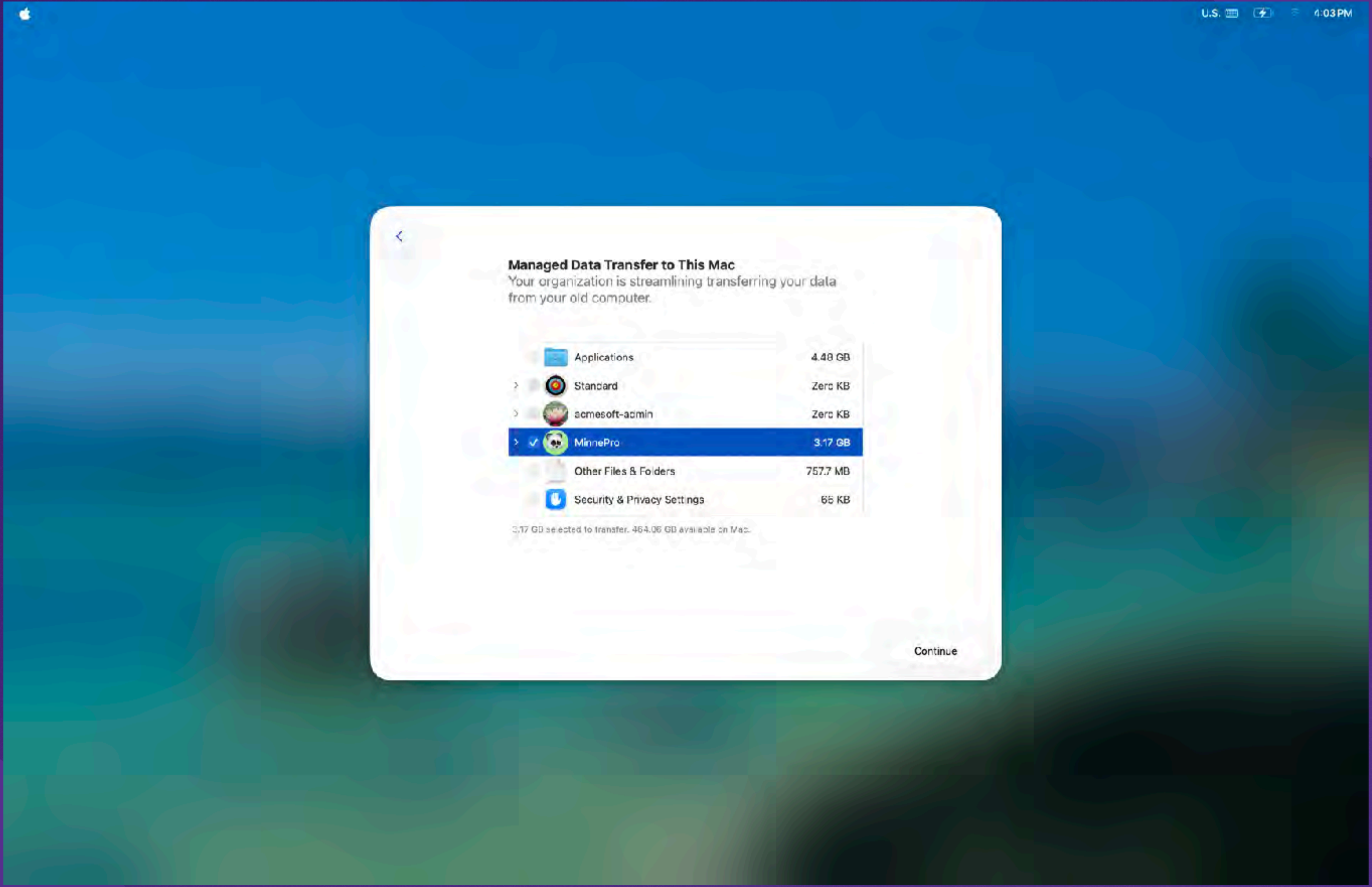
No user acceptance

No logout or restart

Recovery key display optional



Managed Migration Assistant





Managed Migration Assistant



26.4

DDM declaration via Blueprints

Migrated user becomes MDM enabled

Respects PreStage account settings

Migrate only approved data

Exclude local admin accounts

Platform SSO

during Automated Device Enrollment

Platform SSO during Automated Device Enrollment



Install profile and app
at enrollment

Authenticate for enrollment

Create user from identity



SSO Extension

macOS 10.15



App



SSO Profile



Identity App

macOS 14

Platform SSO



Login



App



(P)SSO Profile



Identity App



Regular Creation of First Account

Could cause mismatch on Account Name and Sort Name



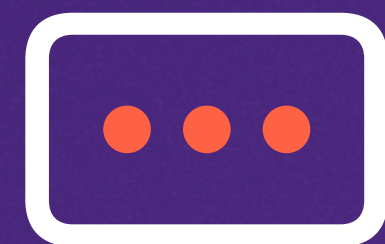
Device & User Registration

Prompts for multiple authentications during setup & not enforceable



Secure Enclave ≠ “Passwordless”

Prompts for multiple authentications during setup



Password Sync For More...

Certain PSSO features requires Password as the authentication method

Platform SSO during Automated Device Enrollment

macOS 26



Setup



Login



App



(P)SSO Profile



Identity App

Identity Providers Support



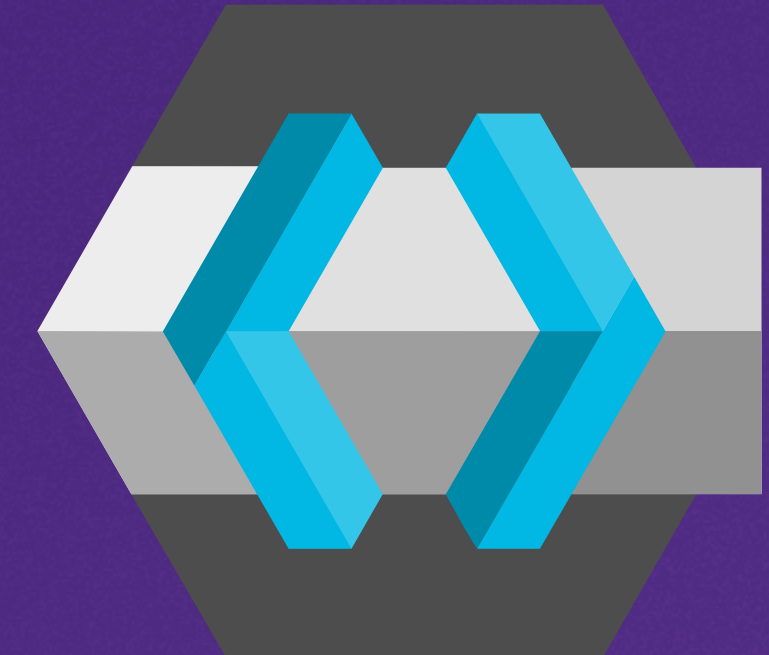
Okta
Okta Verify



Entra ID
Company Portal



TwoCanoes
XPSSO
(Google)



Keycloak



JIT First Account Creation

Account name, short name and password (if configured that way) synced with IdP



Device & User Registration

Each IdP handles this differently but still expect to enter credentials more than once



Pre-Stage Delivery of Tooling

Expect to stay on “Remote Management” pane for longer than usual



Break Glass Emergencies

Bootstrap Token now Escrowed at enrollment, remote wipe at setup assistant

Enforce a minimum macOS version that the computer must have before continuing Automated Device Enrollment

No enforcement

Enrollment Customization Configuration

Configuration to use for customizing the user experience in the Setup Assistant

None

Setup Assistant

- Automatically advance through Setup Assistant (macOS 11 or later only)
Automatically skips all Setup Assistant screens that can be skipped during enrollment.
- Enable Simplified Setup for Platform Single Sign-on (macOS 26 or later)
Enable users to synchronize their local account credentials with an identity provider.

Platform Single Sign-on App Bundle ID

com.okta.mobile

Setup Assistant Options

Selected items are not displayed in the Setup Assistant during enrollment

All

- Get Started



macOS 26 Escrows Bootstrap Token At Enrollment

Enabling Admins to send a remote wipe at the setup assistant



Managed Local Admin in Pre-Stage

Enables “Command Q” at setup screen and local admin to log in

Authenticated Guest Mode

macOS 26



Temporary users on shared Macs

Use organization credentials to log in to any shared Mac



Tap to Login

authenticated Guest Mode with NFC cards
Requires external card readers

WWDC 26: new features

macOS 27



Require Touch ID

Enforce Touch ID as a second factor during login and screen unlock



Web-based authentication option

Multi-factor authentication in secure web view customizable interface

login, screen unlock and FileVault

One-time code, Push notification, QR code, ...



Authenticated Guest Mode + FileVault

Bootstrap Token now Escrowed at enrollment, remote wipe at setup assistant

Enrollment Options



Auto Advance



Minimum
OS Version



FileVault



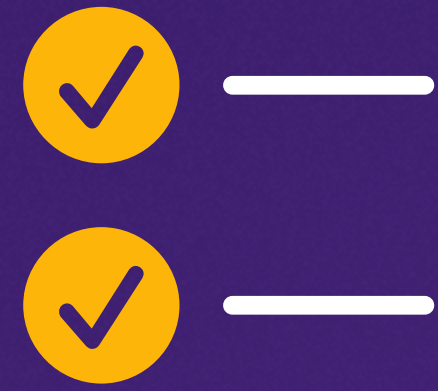
Managed
Migration
Assistant



Platform SSO



Enrollment



Setup Assistant



User Creation



Productivity

Setup Manager



Jamf Connect



Self Service Plus



Managed Apps



PSSO



Setup Checklist



Security



Compliance



Setup Checklist



Setup Checklist

Jamf Checklist
Configure your new Mac!

Suggested

- Welcome**
Just a few more steps to configure your new Mac.
- Confirm Default Browser**
Confirm Microsoft Edge as default browser.
- Choose Mail App**
Choose your preferred app for email.
- Thank you**
The configuration is complete. You can re-apply these settings by runni...

Completed


- Choose a wallpaper**
Complete
- Choose PDF App**
Complete

Welcome
Just a few more steps to configure your new Mac.

Powered by Jamf


Continue


Screen Recording



"zoom.us" would like to record this computer's screen and audio.

Grant access to this application in Privacy & Security settings, located in System Settings.

 [Open System Settings](#) [Deny](#)



Do you want to change your default web browser to "Chrome" or keep using "Safari"?

Your default web browser opens when you click links in places like email messages, documents, and other apps.

[Use "Chrome"](#)

[Keep "Safari"](#)

What is Setup Checklist?

Some configurations have to be done by the user

Setup Checklist *guides* user

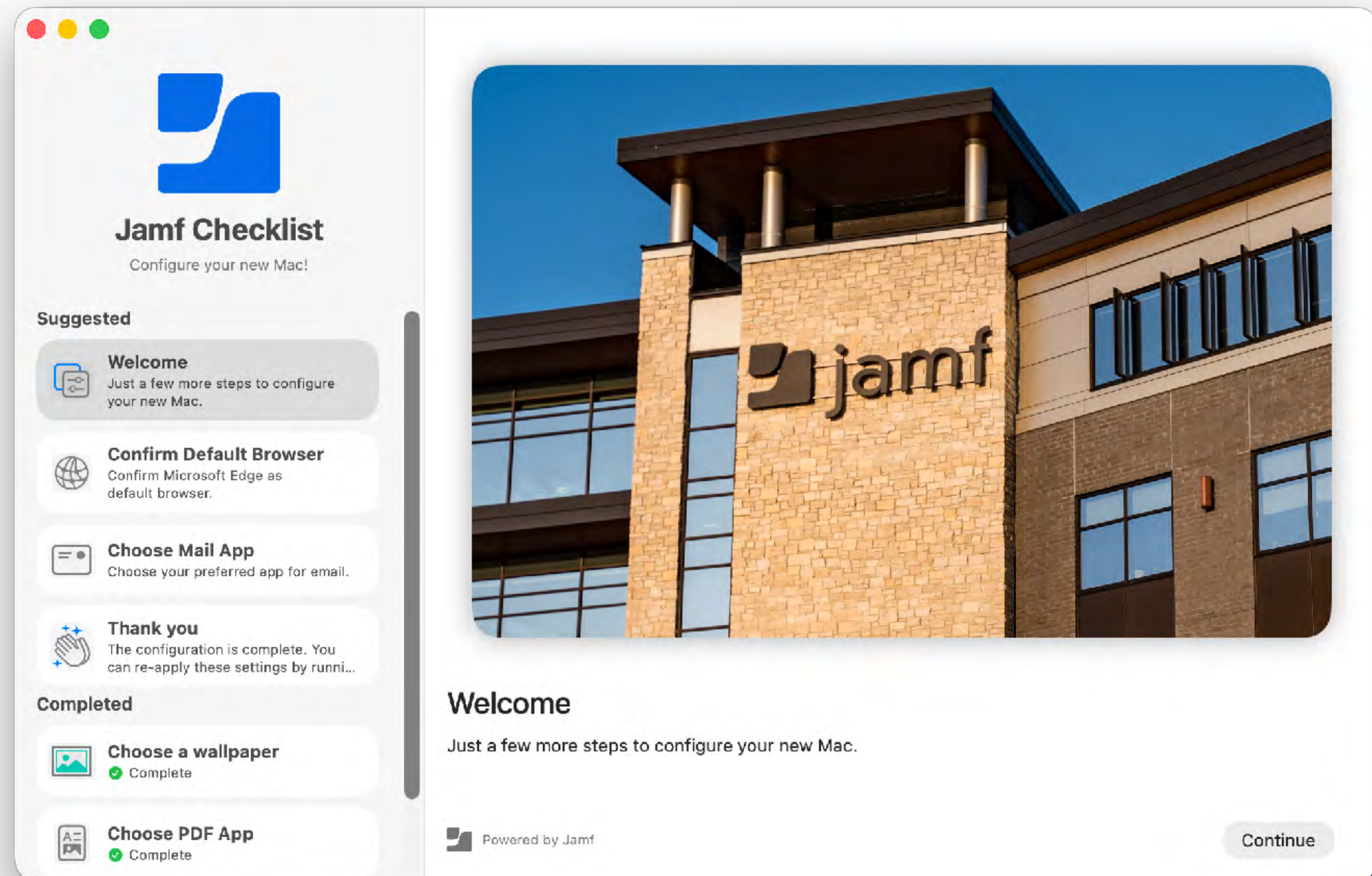
Customizable branding

Custom welcome screen

User can re-open to re-run/re-set

Configured with profile

Jamf School and Jamf Pro



Call to action

We test, but things may still be buggy

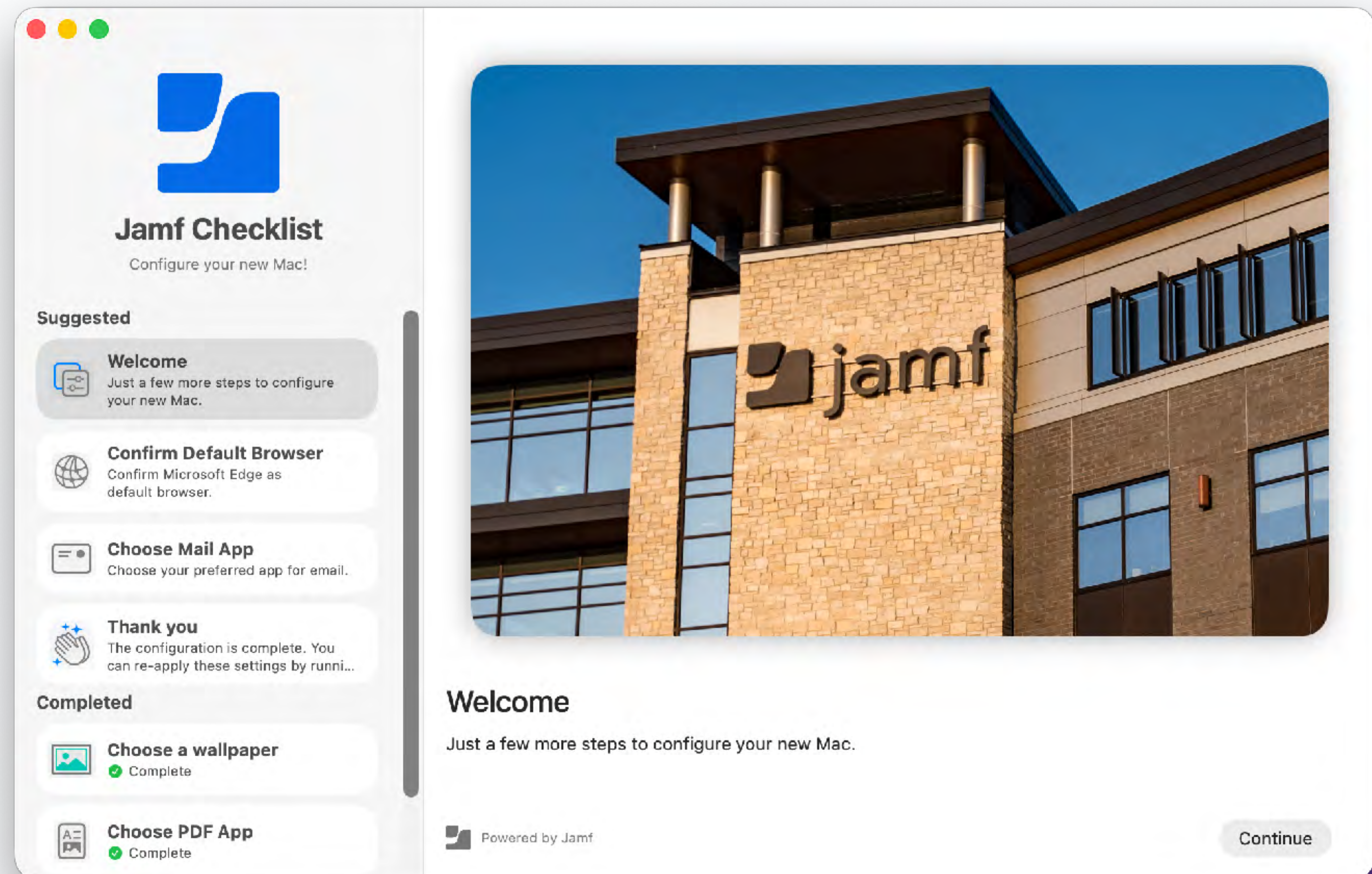
Profile schema will change

- be prepared to update

Long list of to-dos

- help us prioritize

Feedback!



Configurable Steps

Custom messaging

Video/movie

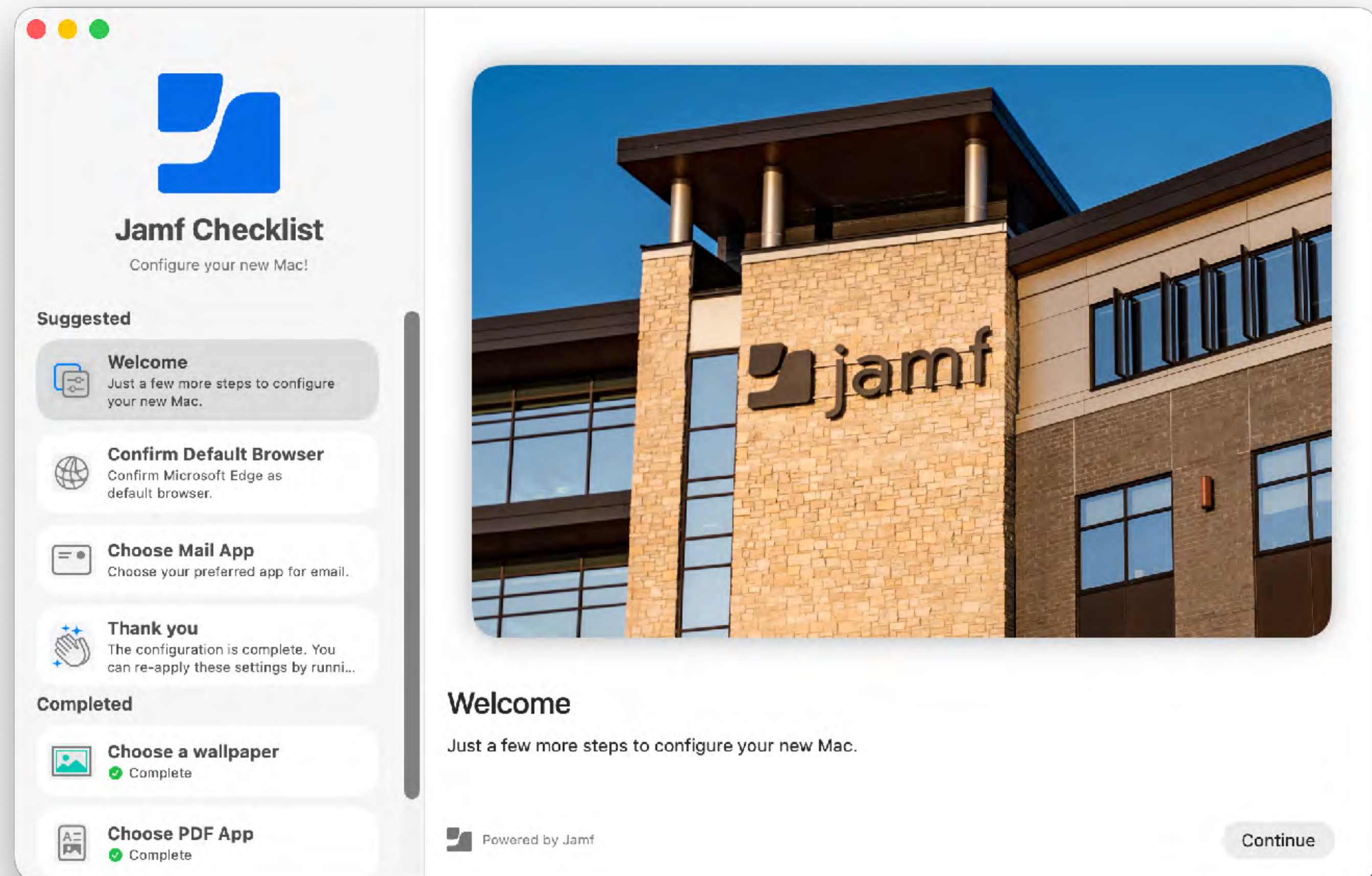
Wallpaper

Dock

Open app or URL

Choose/assign default app

Approve Screen Recording/Screen Sharing



Script step

Advanced mode!

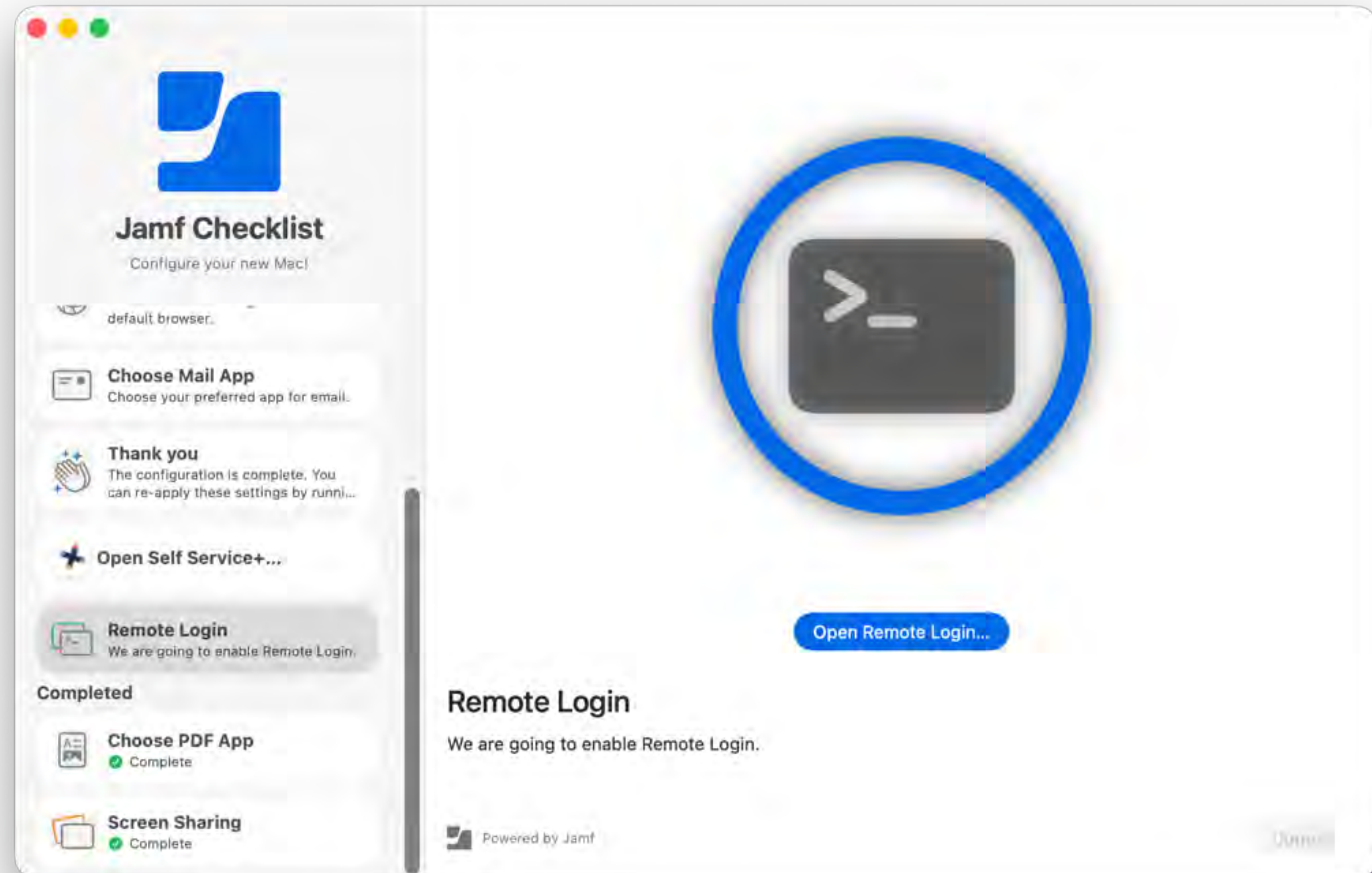
Completely customizable with scripts

Allows for verifying settings and completion

Tutorial in docs

#jamf-setup-checklist

- OneDrive, Teams, Outlook
- Zscaler



But wait, there's more!

Open app or url when finished

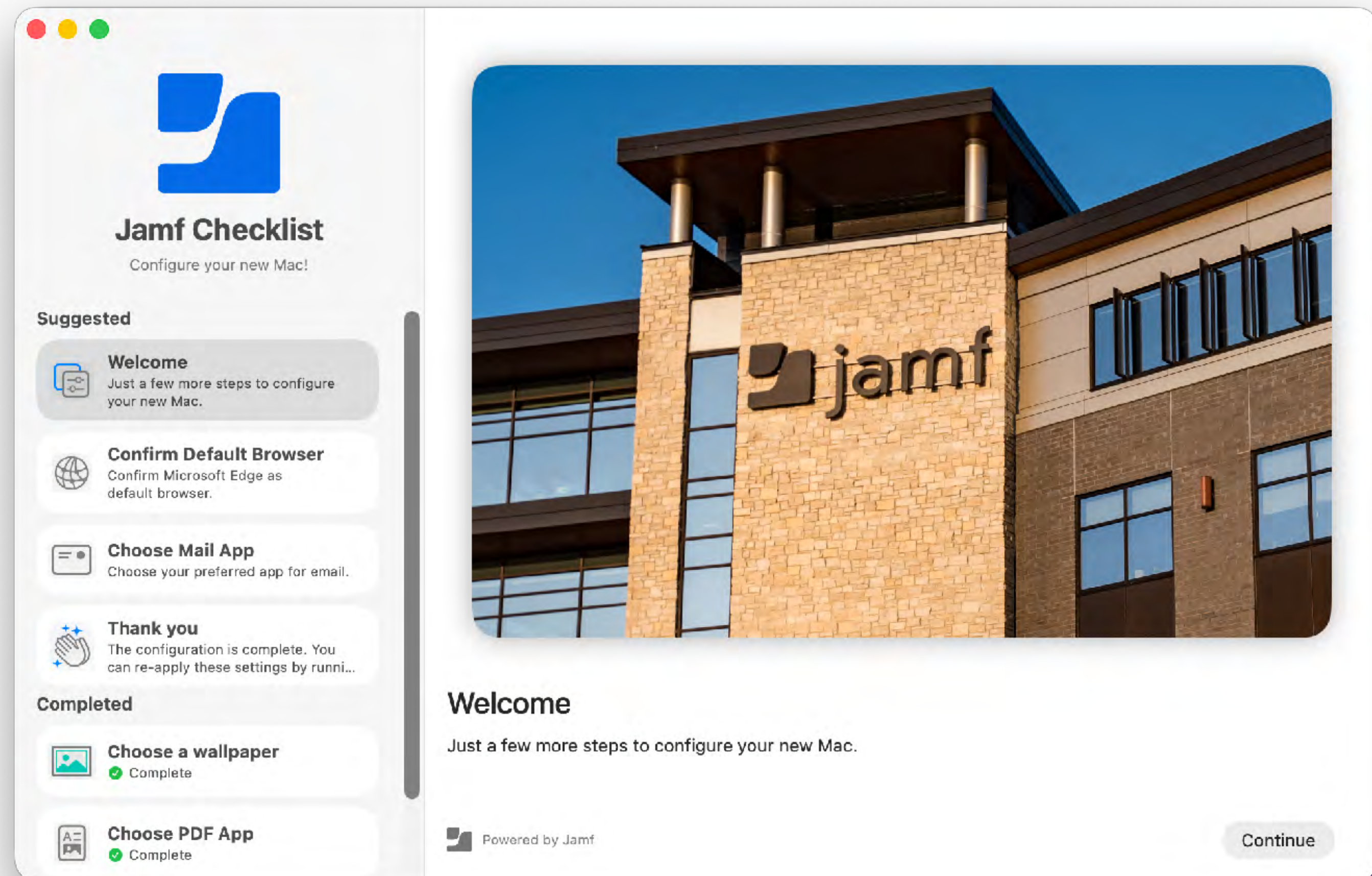
- e.g. Self Service+

Localization: 🇺🇸 🇩🇪 🇫🇷 🇮🇪

- localize custom messages

lots of plans

- dock
- EULA
- post login installations



Setup Manager



jamf.it/setup-manager

Setup Checklist



jamf.it/setup-checklist

 jamf | PRO

 jamf | SCHOOL

Thank You